

aces

INNOVATORS IN EDUCATION



ANNUAL REPORT  
2011-2012



# Table of Contents



Mission / Organizational Beliefs	1
Governing Board	2
Message from the Executive Director	3
About ACES	4
Empowering Students - Interdistrict Cooperative Grants	5
Solving Identified Needs - ACES Regional Curriculum Consortium	6
Schools	8
Services	9
Central Administration	11
2011-2012 Expenditures	12
2012-2013 Budgets	13
2011-2012 Service Recipients	14
Relationships and Funding	15
2012-2013 Organizational Chart	16
Directory 2012-2013	17

*Area Cooperative Educational Services does not discriminate on the basis of race, color, age, ethnicity, national origin, religion, gender, disability or sexual orientation.*

*Copyright ©2012 Area Cooperative Educational Services - This publication is protected by copyright and all rights are reserved. No parts of this document may be reproduced or transmitted in any form or by any means, electronic or mechanical, for any purpose, without the express permission of Area Cooperative Educational Services.*

# Mission / Organizational Beliefs



## Mission

The Mission of ACES, a leader and innovator in education, is to empower our students, member districts, and other clients to meet educational and life challenges in the changing global environment by providing collaborative, customized, cost effective solutions to meet identified needs of our educational community.

## Organizational Beliefs

- Each individual has inherent worth
- All individuals can learn
- High expectations and effort are essential for higher achievement
- Quality education provides the foundation for the success of the individual and the community
- Diversity strengthens an organization
- Individuals are accountable for their actions
- Everyone has a responsibility to each other and to contribute to the common good
- Honesty and respect are essential for building trusting relationships
- A positive attitude enhances performance
- Collaboration enhances productivity and generates creativity
- Families are essential partners in education
- The willingness to change is necessary for individuals to grow and organizations to thrive



# Governing Board

SCHOOL DISTRICT	MEMBER	OFFICE
Ansonia	Fran DiGiorgi	
Bethany	Janet Finneran	Fiscal Officer
Branford	Judith Hotz	Executive Committee
Cheshire	Stephen Mrowka	
Derby	Ken Marcucio	
East Haven	Vacant	
Hamden	Michael Dolan	
Meriden	John Lineen Jr.	Executive Committee
Middletown	Gene Nocera, Ph.D.	
Milford	Vacant	
Naugatuck	James Scully	
New Haven	Vacant	
North Branford	Anthony Ferraiolo	
North Haven	Alicia Clapp	Chair
Orange	Vacant	
Oxford	Paula Guillet	
Regional District #5 (Amity)	Sue Cohen	Vice Chair
Regional District #13 (Durham, Middlefield)	Norm Hicks	Executive Committee
Regional District #16 (Prospect, Beacon Falls)	Vacant	
Seymour	Ed Strumello	
Wallingford	Kathy Castelli	
Waterbury	Elizabeth Brown	
West Haven	Vacant	
Wolcott	Roberta Leonard	
Woodbridge	David Bernard	



# Message from the Executive Director



Greetings:

As Executive Director of Area Cooperative Educational Services (ACES), I am proud to present the 2011 – 2012 Annual Report.

For 43 years, ACES has been a resource for our 25 member school districts, their students and families, and the ACES region. In 2011-2012, ACES schools, services and programs served over 2,200 students and thousands of educators from over 58 Connecticut communities. ACES Professional Development and School Improvement Unit hosted close to 14,000 educators at its Hamden-based facility while thousands more participated in professional development activities in their schools and districts. ACES programs and services range from early childhood to career development and transition for multi-challenged adults ages 21 and above.

A commitment to providing innovative solutions to education's most pressing problems and proactively addressing the needs of our member districts is central to ACES work. Featured in this year's Annual Report are two outstanding examples of our commitment to supporting and improving public education, ACES Regional Curriculum Consortium and ACES Connecticut State Department of Education-funded Interdistrict Cooperative Grants. These are two of ACES many programs and services that have been created and implemented to solve identified needs, to meet educational challenges, and to empower students.

I invite you to learn about ACES innovative initiatives and hope that you will recognize ACES as your primary resource for assisting you in improving education for all our students.

Sincerely,

A handwritten signature in black ink that reads "Craig W. Edmondson". The signature is written in a cursive, flowing style.

Craig W. Edmondson, Ed.D

# About ACES



Area Cooperative Educational Services (ACES) is the Regional Educational Service Center for the twenty-five school districts in south central Connecticut. We exist to improve public education through high quality, cost effective programs and services. Over 40 states operate Educational Service Agencies because of the educational and financial benefits that are obtained through regional collaboration.

We meet the educational needs of our member districts by acting as both a local education agency (LEA) and as a regional educational service center (RESC). As a Local Education Agency, we operate schools designed to meet the specific needs of the region, currently special education and the Interdistrict magnet schools.

As a regional service agency, we develop solutions to the most pressing needs of our member school districts. From school-based technical assistance to programs that advance the education workforce, we work hand in hand with state officials and local educators to improve the quality of teaching and learning.

Our revenue sources include tuition and fees for services from local education agencies, state and federal funds, and private sources, including grants and fees for services. Local school districts appoint a representative to the ACES Governing Board and work collectively to set a strategic direction for the organization based on the educational needs of the region.

Local school districts appoint one of their board of education members to be a representative on the ACES Governing Board. ACES Governing Board members work collectively to set a strategic direction for the organization based on the educational needs of the region.





## Interdistrict Cooperative Grants

Funded by the Connecticut State Legislature through the Connecticut State Department of Education, ACES Interdistrict Cooperative Grant programs have two goals: 1. to reduce student isolation, and 2. increase student achievement. These goals are accomplished through a variety of creative, engaging, and academically enriching initiatives. ACES current Interdistrict Grant Programs are:

**A Passion for Justice: Making a Difference** presents middle school students with the life of Prudence Crandall, a 19th-century educator and heroine who fought prejudice to educate young black women in Connecticut. This program enables students to explore their own beliefs, and express themselves through persuasive writing and conflict resolution activities. A Passion for Justice is a collaboration among ACES, Young Audiences of Connecticut and the Anti-Defamation League.

**Math Counts: CMT Preparation** brings 5th – 8th grade students together in a camp-like setting to use cooperative learning skills, manipulative materials and hands-on projects to help strengthen math and problem solving skills. Student math scores on pre- and post- tests showed significant improvement during the intensive two week program.

**Project LUCID (Literacy Uniting Children in Diversity)** provides 1st – 12th grade students with the opportunity to enhance their literacy and technology skills while expanding their knowledge of different cultures. Students engage in hands-on activities that use 21st Century technology and problem solving skills.

**Sharing Our Stories: Living and Learning in 21st Century CT** pairs 4th – 5th grade students from urban and suburban districts to learn storytelling, research, documentation and video techniques. Culminating activities with families allow students to demonstrate their new skills and understandings.

**Sister Schools** enables K – 12th grade students, their teachers and their parents to collaborate on multi- cultural projects. This program provides students with opportunities to develop their literacy and technology skills while learning about other cultures.

**The Write Stuff: CMT Preparation** brings 1st – 4th grade students from multiple districts together for structured, fun literacy experiences. This academic summer camp helps children learn writing skills, and helps them develop a deeper understanding of themselves and the other campers who come from different communities. Pre- and post- writing prompt scores consistently show improvement in student writing skills at the end of the camp session.

**Words, Action, Theater** provides middle school students with multidisciplinary learning experiences that focus on the arts and literacy. Students engage in a variety of activities that include playwriting, acting, art, technical theatre, improvisation, music and movement. A two week summer program is followed by regular follow-up sessions throughout the school year.

*“The camp provided my daughter with a learning experience that fostered her knowledge. It was incorporated in ways that kids enjoy. To all the staff and the organizers, thank you for a job well done.”*

Parent of student in The Write Stuff: CMT Preparation Camp, Summer 2012

*“This program did a great job in providing students with opportunities to explore other cultures and count similarities rather than differences. My daughter’s excitement to tell me about it reflects the effectiveness of such a program. I believe that reducing racial isolation will improve academic behavior.”*

Parent of student in A Passion for Justice, Spring 2012

*“I liked that the students were able to learn about each other’s communities by interviewing community leaders. This gave them an opportunity to ask the Mayor and First Selectman about things that they wanted to know about.”*

Teacher, Sharing Our Stories: Living and Learning in 21st Century Connecticut, Spring 2012

# Solving Identified Needs



## ACES Regional Curriculum Consortium

During the 2011 - 2012 school year, Area Cooperative Educational Services (ACES) launched the ACES Regional Curriculum Consortium, an innovative regional initiative created to assist members with the work of fully implementing the Common Core Standards in the areas of English Language Arts (ELA) and Mathematics.

The Curriculum Consortium was designed to facilitate collaboration among member districts, and realize economies of scale to make the work achievable. Presently, the Consortium has nineteen members – eighteen school districts from ACES south central Connecticut catchment area and one New Haven - based charter school.

The ACES Regional Curriculum Consortium was conceived and developed by ACES Professional Development and School Improvement unit (PDSI). From the outset, the Consortium was governed by a Steering Committee comprised of one person from each member district or school. The Steering Committee helped to shape the goals and work for the Consortium and along with the PDSI staff identified two important outcomes for phase one of the Consortium:

1. To build participants' knowledge base about the Core Standards, and about a process for writing units of instruction
2. To design at least two units of instruction for each grade level K - 12, for both Math and ELA

ACES PDSI Education Specialists developed and delivered four workshops related to the Core Standards, and facilitated two one-week long workshops for K – 12 grade teachers that focused on the new English Language Arts (ELA) and Mathematics standards. These week-long sessions engaged participants in intensive, collaborative curriculum development and writing. During the first curriculum writing week, 162 participants representing 18 districts and one charter school spent a total of 9,700 work hours to produce 79 fully-articulated K – 12 English Language Arts and Mathematics units of study that are aligned with the Common Core Standards. Consortium members have 24/7 access to the units.



# Solving Identified Needs

*“This has been one of the best, if not the best, professional development experience in which I have ever participated. The consortium has been a worthwhile experience, which will allow me to be a better educator and will allow my students to take ownership of their learning.”*

*“This idea of regional work could be transformative for education if we do it well and really mean it. The idea of moving beyond a district to create and share resources together has SO much potential.”*

*“I learned a tremendous amount of information about the Common Core...”*

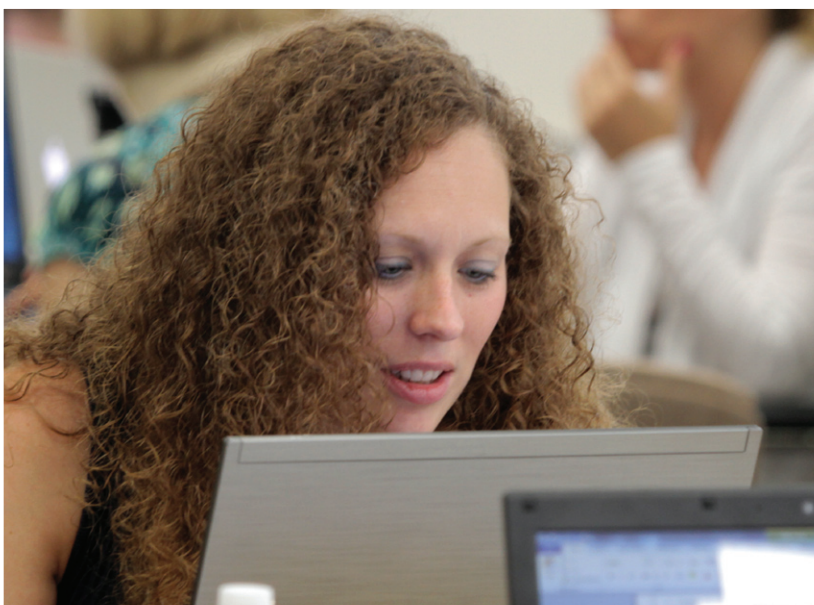
*“This is going to help me as an administrator. I have a deeper understanding of what I should be seeing in my classrooms.”*

*“I have also learned more about myself as a teacher, and more importantly, the teacher I want to be. I believe the Common Core is a step in the right direction...”*

*“The ACES Curriculum Consortium has been invaluable to me as an educator. As a result of this week, I have focused once again on student-centered teaching.”*

*“I now feel that I understand the Common Core State Standards and am ready to implement them. I feel equipped to help my colleagues in implementing the CCSS in their classrooms. I feel very strongly that students will benefit from the new curriculum.”*

*“Beyond working with the core standards, I also feel that there was great value in the collaboration with other districts. I believe that alignment in education is very valuable, and this consortium really was a great step in that direction.”*



# Schools

*As a Local Education Agency, ACES operates a number of schools and educational programs serving the needs of member school districts across the region. The two primary district needs that we address in our schools are: a) issues of academic achievement stemming from racial, ethnic and the economic isolation; and b) educating students whose disabilities pose challenges that exceed the capacity of local districts. In response, we provide rigorous academic curricula through three Interdistrict Magnet Schools enrolling nearly 1,700 students, five special education schools enrolling close to 700 students, and a number of district-based programs.*

## Interdistrict Magnet Schools

**ACES Educational Center for the Arts (ECA)** is the oldest of ACES three magnet schools. This half-day program serves 300 students in grades 9-12 who are highly motivated in the visual, music, dance, theatre and literary arts. Students attend ECA in the afternoon to work with professional artists. Students earn credit at their home high school for their work at ECA. The school is located in the Audubon Arts District in New Haven.

**ACES Thomas Edison Middle School (TEMS)** serves 723 sixth, seventh and eighth grade students. Meriden, Middletown and Regional District #13 are TEMS partner districts. Participating districts include Hamden, New Britain, North Haven, Terryville, Wallingford, and Waterbury. TEMS focuses on Math, Science and Technology through a hands-on exploratory method of learning.

**ACES Wintergreen Interdistrict Magnet School (WIMS)** provides a comprehensive liberal arts education to 640 Kindergarten through eighth grade students. Hamden, Meriden, New Haven, Wallingford and Woodbridge are WIMS partner districts. WIMS also enrolls students from many communities through ACES Magnet School Parent Choice program. The school focuses on developmentally appropriate instruction within an extended school day and year, the integration of technology into the curriculum, and Spanish language study at each grade level. In addition, WIMS emphasizes the role of the arts in learning.

## Special Education Schools

**ACES Center for Autism Spectrum & Developmental Disorders** is an educational and clinical program serving 37 students ages 11 – 21 who come from 21 districts from throughout Connecticut. The Center serves students with Autism Spectrum and Developmental Disorders. The primary goal of the program is to provide science-based instruction, training, and behavior intervention programs that promote functional independence.

**ACES Mill Road School** is a K-8 school which encompasses two programs: The Mill Road Program and the Urban Youth Elementary Program. The Mill Road Program serves children K-8th grade with serious social, emotional and behavioral difficulties, including students on the autism spectrum. The New Haven Urban Youth Elementary Program, a combined regular K – 5th grade and special education program, services students with emotional, educational and social issues in an integrated environment.

**ACES Whitney High School East & West** serves a variety of challenging students between the ages of 14 and 21. The educational program provides student with all of the necessary supports in order to enhance students' ability to develop in the areas of vocational/employment, life skills, communication and social skills and more.

**ACES Whitney High School North** provides a positive, individualized, and multifaceted learning environment which allows students with serious emotional disabilities, grades 9-12, to maximize both their capabilities and potential for happiness and well-being. The program goals include enhancing communication systems, social skills, cognitive skills, vocational skills, student/family support systems, and life skills, as well as facilitating access to community resources.

**ACES Village School** consists of three units: Early Childhood, Early Intensive Behavior Intervention for students on the autism spectrum, and Elementary/Middle School Programs. ACES Village School provides extensive services to children ages 3-14 with a wide range of abilities and complex needs. Related services include speech, physical and occupational therapies, social services, behavioral services, adaptive physical education, music therapy and nursing services.



*As a Regional Educational Service Center (RES-C), ACES is committed to developing solutions to the most pressing educational needs of the region and state. By leveraging strong local relationships with a broad state-wide network of resources, we deliver high quality, cost efficient services to our member districts.*

## School Improvement Services

**ACES Professional Development and School Improvement (PDSI)** provides districts with high-quality programs, services, resources and technical assistance to build their staff capacity to meet the learning needs of their students. Through consultation, facilitation, and professional development services, PDSI works in collaboration with districts to address their specific needs in both regional and customized formats. The PDSI staff is highly motivated and innovative with expertise in a wide range of content, technology, leadership, assessment, training and administration areas. The PDSI unit focuses on school improvement planning, leadership development, and staff evaluation, offering technical assistance, strategic planning, training, coaching and support for implementation of new initiatives.

**ACES Early Childhood Services** offers high quality interdisciplinary consultation and training to early childhood practitioners and supports the design and development of early childhood experiences, which are critical to a child's long-term development and academic success. ACES is committed to increasing the quality of programs by strengthening the connection between our member districts and local child care and school readiness programs in our region. The ACES Middlesex County Early Head Start Partnership, now in its third year of federal funding, serves 70 infants/toddlers in six communities. Through regional collaboration, we are able to respond to community needs, share best practices, prepare a more qualified workforce, and maximize resources.



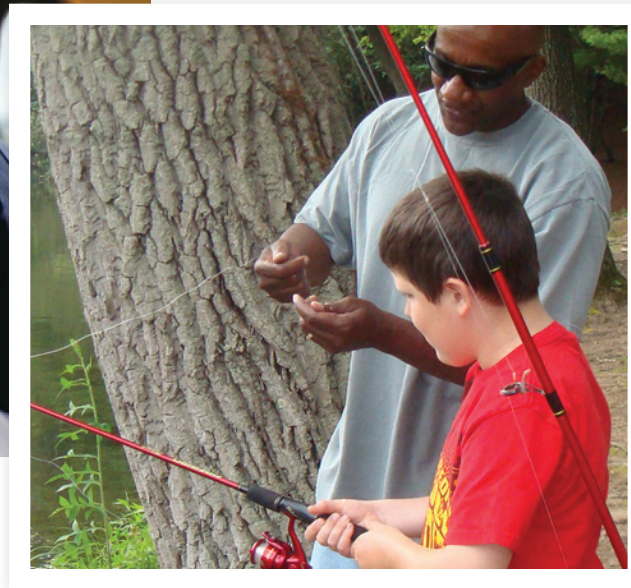
## Specialized Services

**ACES Behavior Services** is staffed with experts in the conceptual and technical application of applied behavior analysis. The ability to predict and change behavior are of vital interest to parents, schools and the community, and ACES Behavior Services offers the tools to accomplish this. The department provides a wide range of training and direct intervention options to school districts, students and parents.

**ACES Extension Therapy Services** provides contractual occupational therapy and physical therapy services to member school districts and local private schools. Services are provided as a related service when deemed necessary for a special education student to participate in his and/or her educational curriculum and also to provide, as requested by the LEA or school, support to the general education curriculum.

**ACES Technology Services** provides support and database services to districts ranging from highly technical infrastructure issues through desktop support helpdesk services. These services are provided through a collaborative model in which districts are fully engaged in the decisions and technological directions which affect their students and teachers.

**ACES Transportation Services** provides transportation for students and adults to and from ACES facilities as a contractual service to our local school districts and agencies.



## Regional Educational Programming

**ACES Open Choice**, established in 1998, provides options for families to choose available openings in urban and suburban schools. Approximately 500 students and 14 school districts participate in this program.

**ACES Magnet School Parent Choice** is coordinated by ACES Program Development for the ACES region. In 2011 – 2012, 54 new students enrolled from non-member districts into ACES Magnet Schools - WIMS and TEMS.

**ACES Interdistrict Grant programs** support students in over 27 districts. ACES coordinates seven programs funded by the Connecticut State Department of Education's Interdistrict Cooperative Grant Program. These programs foster academic improvement and a greater understanding of diversity by connecting students from multiple districts through face-to-face interactions with each other for academic and cultural experiences led by certified staff and experts in a variety of fields.

**ACES - West Haven High School Collaborative** provides educational services to fifteen students identified with Intellectual Disabilities at West Haven High School. Daily programming includes academic, vocational, and social skills instruction.

**ACES Services at the Hospital of St. Raphael** fill a critical gap in the hospital's inpatient mental health services for school age children. The program keeps students in the care of the hospital's Children's Psychiatric Emergency Services (CPES) on pace academically. The program supports the transition of students in and out of the hospital by serving as a liaison between the family, school, and CPES. Daily group and individualized instruction are delivered by a certified special education teacher.

**ACES ACCESS** supports the career development and transition for a multi-challenged adult population (ages 21 and above). The program provides vocational training and support to adults with disabilities in Greater New Haven in the areas of Individual Employment, Group Supported Employment, and Volunteer Services. Individual Employment assists the individual with securing and sustaining competitive employment in the community. Group Supported Employment assists individuals working in a group setting with other program clients and company employees. Volunteer Services assists individuals with obtaining and participating in volunteer opportunities to enhance employability skills, and to become contributing members of their community.



# Central Administration

*ACES Central Administration is dedicated to providing the sound technology, administration, fiscal and related services necessary to carry out the mission and goals of the agency. ACES Central Administration oversees the smooth and efficient operation of our \$112 million budget, close to 900 employees, 14 buildings and 120 vehicles.*

## **ACES Executive Director**

serves as the Chief Executive Officer of ACES as a regional service agency and as the Superintendent of ACES schools.

## **ACES Assistant Executive Director for Curriculum and Programs**

oversees the development, delivery, and assessment of teaching and learning within ACES schools and education programs.

## **ACES Assistant Executive Director for Finance and Operations**

oversees the agency's Fiscal Services, Buildings and Grounds, Transportation Services, Technology Services, Marketing and Public Information, all outsourced food services, and serves as a risk manager for the agency's insurances.

## **ACES Fiscal Services**

processes all purchase orders and invoices for our \$112 million budget, as well as biweekly payroll for close to 900 employees.

## **ACES Human Resources**

manages the agency's efforts to recruit, hire and retain a diverse workforce. This includes new employee orientation; training for employees in the areas of sexual harassment, protection & advocacy, child abuse/neglect and OSHA; benefits administration; employee relations; responding to employees' inquiries/complaints/grievances; managing leaves; interpreting and mediating contractual issues and working conditions; union negotiations; worker's compensation; employment verifications; attorneys' requests; wage garnishments; teacher certification and retirement; minority teacher recruitment; management of the MUNIS Self Service; job postings; and, collaborative work with school districts, and Regional Educational Services Centers on projects pertinent to delivering quality educational services.



## **ACES Marketing and Public Information**

seeks to increase the organization's visibility across the region and oversees the production of all internal and external publications.

## **ACES Program Development**

creates new ACES programs to respond to the needs of its own schools and programs and those of its member districts, secures resources to pilot, expand and sustain quality educational programs, and convenes and supports the ACES Education Foundation.

## **ACES Pupil-Related and Assistive Technology Services**

provide ACES internal schools with specialized services such as: social work, developmental guidance, psychology services, speech, assistive technology, physical and occupational therapies nursing and psychiatric counseling services. ACES Assistive Technology Services addresses the needs of local school districts through a team-oriented decision making process in the selection, acquisition and use of assistive device(s).

# 2011-2012 Expenditures

## LEGEND OF FUNDING SOURCES

L: Local                      F: Federal  
S: State                      O: Other

DESCRIPTION	SOURCE	BUDGET
<b>INSTRUCTIONAL PROGRAMS</b>		
<b>SPECIAL EDUCATION</b>		
Mill Rd	L	5,954,921
Mill Rd Student Activities	O	22,503
SAILS - Standard	L	616,400
SAILS-Intensive	L	2,193,190
Summer School	L	1,486,986
Transportation	L	2,602,652
Village EIBI	L	3,260,812
Village School	L	5,424,735
Village Student Activities	O	6,916
West Haven High Program	L	320,075
Whitney High School East & West	L	7,744,377
Whitney High School North	L	4,164,822
WHS East/West Student Activity	O	15,289
WHS North Student Activity	O	30,685
		<b>\$ 33,844,363</b>
<b>MAGNET SCHOOLS</b>		
After School - TEMS/WIMS	S	150,000
ECA Magnet Grant	S	1,495,806
ECA Student Activities	O	69,022
Educational Center for the Arts	S,L	2,525,337
Magnet Transportation-WIMS	S	195,728
MSAP-Learning Through Science	F	330,937
TEMS Magnet Grant	S	3,206,834
TEMS Student Activities	O	1,454
Thomas Edison Middle School	S,L	9,298,920
Title I Improving Basic Programs 6/12	S	152,778
Title I Improving Basic Programs 6/13	S	280,476
Title I Improving Basic Programs ARRA	S	449
Title II A Teachers 6/12	S	47,094
Title II A Teachers 6/13	S	29,783
WIMS After School Program	L	431
Wintergreen Magnet Grant	S	4,876,800
Wintergreen Magnet School	S,L	7,373,651
Words! Action! Theatre!	S	115,719
		<b>\$ 30,151,219</b>
<b>REGULAR EDUCATION</b>		
New Haven CHOICE	L	252,208
New Haven FY 11 Carryover	O	354,761
New Haven Magnet Schools	L	382,602
New Haven Voluntary Public Choice	L	48,000
NH Betsy Ross Arts Magnet School	L	735,716
NH Cooperative High School	L	458,911
St. Raphael's Instructional	L	132,742
Urban Youth	L	1,230,691
		<b>\$ 3,595,630</b>
<b>INTERDISTRICT PROGRAMS</b>		
A Passion for Justice	S	55,651
LUCID	S	114,493
Sharing Our Stories	S	59,000
Sister Schools	S	88,173
		<b>\$ 317,317</b>
<b>JUSTICE PROGRAMS</b>		
New Haven Detention Center	L	32,120
New Haven Detention Center-Summer	L	47,117
		<b>\$ 79,236</b>
<b>TOTAL INSTRUCTIONAL PROGRAMS</b>		<b>\$ 67,987,765</b>
<b>PUPIL PERSONNEL &amp; SUPPORT SERVICES</b>		
Assistive Technology	L	316,586
Behavioral Services	L	1,478,836
Extension Therapy Services	L	2,206,106
Pupil Services	L	713,136
Student Career & Curriculum Services	L	397,772
Transition Counseling	O	142,831
<b>TOTAL PUPIL PERSONNEL &amp; SUPPORT SERVICES</b>		<b>\$ 5,255,268</b>
<b>EARLY CHILDHOOD-EXTERNAL</b>		
Child Development Training	S,L,O	4,800
Early Childhood Services	S,L,O	366,405
Early Head Start C/O 9/09-9/10	F	100,334
Early Head Start 10/10 - 9/11	F	421,220
Early Head Start 9/11-9/12	F	573,274
East Haven Discovery Grant	O	11,696
East Haven United Way	O	5,790
Middletown QE	O	9,000
Mill Rd Family Resource Center	O	467
New Britain Quality Enhancement	L	17,500
New Haven QE II	L	10,710
West Haven QE	L	12,658
<b>TOTAL EARLY CHILDHOOD-EXTERNAL</b>		<b>\$ 1,533,854</b>
<b>PROFESSIONAL DEVELOPMENT PROGRAMS</b>		
Account for Learning TA 6/12	S	207,200
ACES Internal Professional Development	L	22,682
Adv. Alt. Prog.-Library Media Spec.	L	58,117
ARCTELL	L,O	170,113

DESCRIPTION	SOURCE	BUDGET
Conference Management	S,L,O	79,825
Connecticut Thinkfinity	O	10,273
Curriculum Consortium	L	69,985
Distance Learning Project	L	3,253
EPFP-Title II Part A Teachers	S,L	29,721
E2T2 RESC Tech 10-11 Yr 1	S	74,686
Intel Math PD	S	11,979
MSP Carryover 6/11-9/11	S	54,398
MSP Math Grant 1/1/11-6/30/12	S	130,455
MSP Math Grant 1/1/12-6//30/13	S	51,805
New Haven Action Research	L	60,000
New Haven Supplemental SIG Funds	L	171,108
New Haven TEAM Support	L	268,454
NHPS Transition Services	L	10,400
PDSI Conference Services	L	34,446
PDSI District Agent	L	32,197
ACES Curriculum	L	61,910
Priority Schools	L	176,171
Prof Development/School Improvement	S,L,O	1,657,112
Teaching American History FY 10-14	F	280,349
Teaching American History 7/08-6/12	F	57,336
Teaching American History 9/1/10-8/31/13	F	303,483
Teaching American History 7/1/11-6/30/13	F	369,372
Teaching with Primary Sources	O	19,527
TEAM (Best-ACES)	O	5,750
TEAM (Best-Regional)	S	86,725
Title III A English Acq. 6/13	S	26,988
Title III A English Acq. 6/12	S	6,781
Virtual High School	L	25,685
<b>TOTAL PROFESSIONAL DEVELOPMENT PROGRAMS</b>		<b>\$ 4,628,286</b>
<b>RESC ENTITLEMENTS</b>		
Administering Open Choice	S	176,672
Choice Transportation	S	1,877,130
RESC Restricted/Unrestricted	S	209,376
RESC Title II D Tech 09-11 Yr 2	O	15,275
<b>TOTAL RESC ENTITLEMENTS</b>		<b>\$ 2,278,452</b>
<b>CAREER SERVICES</b>		
ACCESS - Supported Employment	S,O	1,725,842
Vocational Support Services	L,O	154,671
Workforce Alliance WIA Youth Yr 2	O	19,791
Workforce Alliance WIA Youth 11-12	O	80,000
Workforce Alliance Summer-State	O	35,658
<b>TOTAL CAREER SERVICES</b>		<b>\$ 2,278,452</b>
<b>ADMINISTRATION</b>		
<b>CENTRAL OFFICE</b>		
ACES Staff Activities	O	6,509
Ofc of the Asst Exec Director-Finance & OPS	L	252,743
Ofc of the Asst Exec. Director-Progs & Curr	L	237,788
Fiscal Services	L	1,078,790
Governing Board	L	139,755
HR Fingerprint Processing	O	49,998
Human Resources	L	769,475
Information and Marketing Services	L	347,958
Office of the Executive Director	L	388,126
Operations Maintenance	L	414,758
Program Development	L	579,375
Technology Services	L	3,431,805
Wellness Activities	O	6,777
		<b>\$ 7,703,857</b>
<b>BUILDING OPERATIONS</b>		
ACCESS-60 United Dr Capital Project	S,L	60,836
Capital Improvements	L	1,101
Deferred Maintenance	L	115,916
ECA/Little Theatre Capital Project	S,O	1,059,095
Operations-204 State Street	L	169,352
Operations-60 United Drive	S,L,O	173,825
Operations-CASDD	S,L	348,725
Operations-ECA	S,L,O	604,578
Operations-Food Services	S,L,O	719,266
Operations-Little Theatre	L	18,532
Operations-Mill Road	S,L	747,174
Operations-Peter C. Young Building	L	367,093
Operations-Staff Development	L	302,875
Operations-TEMS	L	1,996,676
Operations-Village School	L	516,687
Operations-Whitney East	L	465,766
Operations-Whitney N & W	L	525,064
Operations-Wintergreen	L	1,102,047
Operations-ECA/LT Facility	L,O	74,906
		<b>\$ 9,369,514</b>
<b>TOTAL ADMINISTRATION</b>		<b>\$ 17,073,371</b>
<b>GRAND TOTAL 2011-2012 EXPENDITURES</b>		<b>\$ 100,772,958</b>





# 2011-2012 Service Recipients

	Ansonia	Bethany	Branford	Cheshire	Derby	East Haven	Hamden	Meriden	Middletown	Milford	Naugatuck	New Haven	North Branford	North Haven	Orange	Oxford	Seymour	Wallingford	Waterbury	West Haven	Wolcott	Woodbridge	Reg Dist #5	Reg Dist #13	Reg Dist #16	ACES Programs	Other (#)
<b>SPECIAL EDUCATION SCHOOLS</b>																											
Mill Road School	*		*		*	*	*	*	*		*	*		*				*	*	*		*					11
Village School	*		*	*	*	*	*	*	*		*	*		*	*	*	*	*		*			*				21
Whitney East/West	*		*	*	*	*	*	*	*			*	*	*				*	*	*			*				5
Whitney North	*					*	*	*		*	*	*							*	*							12
<b>MAGNET SCHOOLS</b>																											
ECA			*	*		*	*	*		*		*	*	*		*	*	*		*	*		*	*	*		9
TEMS							*	*	*				*					*	*					*			2
WIMS	*				*	*	*	*		*		*	*					*		*		*					1
<b>SERVICES</b>																											
ACCESS			*	*		*	*	*		*		*	*	*	*			*		*							
Behavior Services	*		*		*	*		*	*	*		*	*	*	*		*	*				*				*	4
Early Childhood						*			*			*						*		*							6
Extension Therapy	*	*	*		*	*					*	*			*		*			*		*	*			*	3
Hospital of St. Raphael	*		*	*	*	*	*	*	*	*	*	*	*	*	*	*	*	*	*	*	*	*	*	*	*	*	52
In-District Collaboratives																				*							
Minority Teacher Recruitment							*	*				*						*	*	*						3	
Open Choice	*	*	*	*	*	*	*			*		*	*	*	*			*		*		*	*			*	7
PDSI	*	*	*	*	*	*	*	*	*	*	*	*	*	*	*	*	*	*	*	*	*	*	*	*	*	*	2
Program Development	*	*	*	*	*	*	*	*	*	*	*	*	*	*	*	*		*	*	*		*	*	*	*	*	10
Pupil/Related Services																										*	
Assistive Technology	*	*	*			*	*	*				*		*	*		*	*	*	*	*	*	*				1
Technology Services	*	*	*	*		*	*	*	*		*		*		*			*	*		*	*			*	*	7
Transportation	*	*			*	*	*		*	*		*								*			*			*	3



## Major Interagency Relationships and Sources of Funding

ACES maintains strong relationships with the school districts that created and govern the organization. This connection with member districts, plus other local funds, accounts for approximately 76.6% of ACES financial support. Programs ranging from education for students with cognitive, emotional and physical challenges to training programs for staff from the school districts are financially supported by the member school districts through tuition and fees for services.

The second major source of support is the Connecticut State Department of Education (CSDE). ACES receives grants and contracts primarily for state initiatives, such as the Magnet School program, Interdistrict grants, the Open Choice program, Professional Development activities, School Construction projects, Enhancing Education Through Technology, and School Readiness programs. These programs have an impact on both school districts and local communities. This support accounts for approximately 17% of ACES income.

The third major ACES interagency relationship involves the Connecticut Department of Developmental Services (DDS). ACES principal involvement with this agency is through programs for disabled adults. This funding represents 2% of ACES budget.

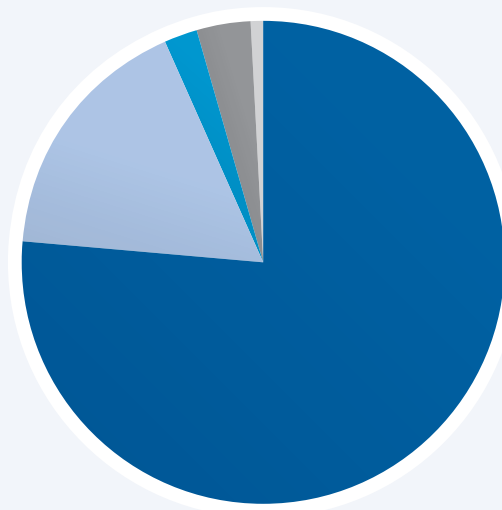
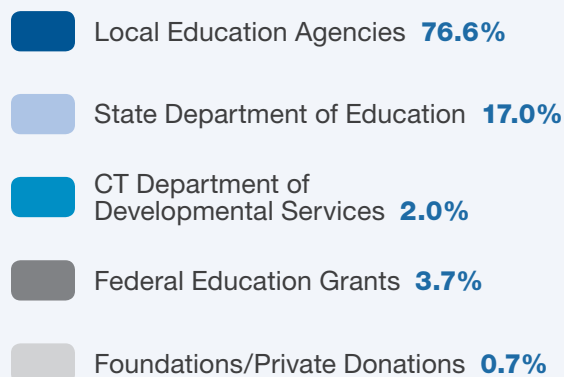
The fourth major source of support for ACES programs is federal funding through grants for educational programming. This source accounts for 3.7% of the total budget.

The final category of major revenue is from private sources in the form of grants from charitable foundations and other special contracts. These grants and “other” contracts represent approximately .70% of the ACES annual budget.

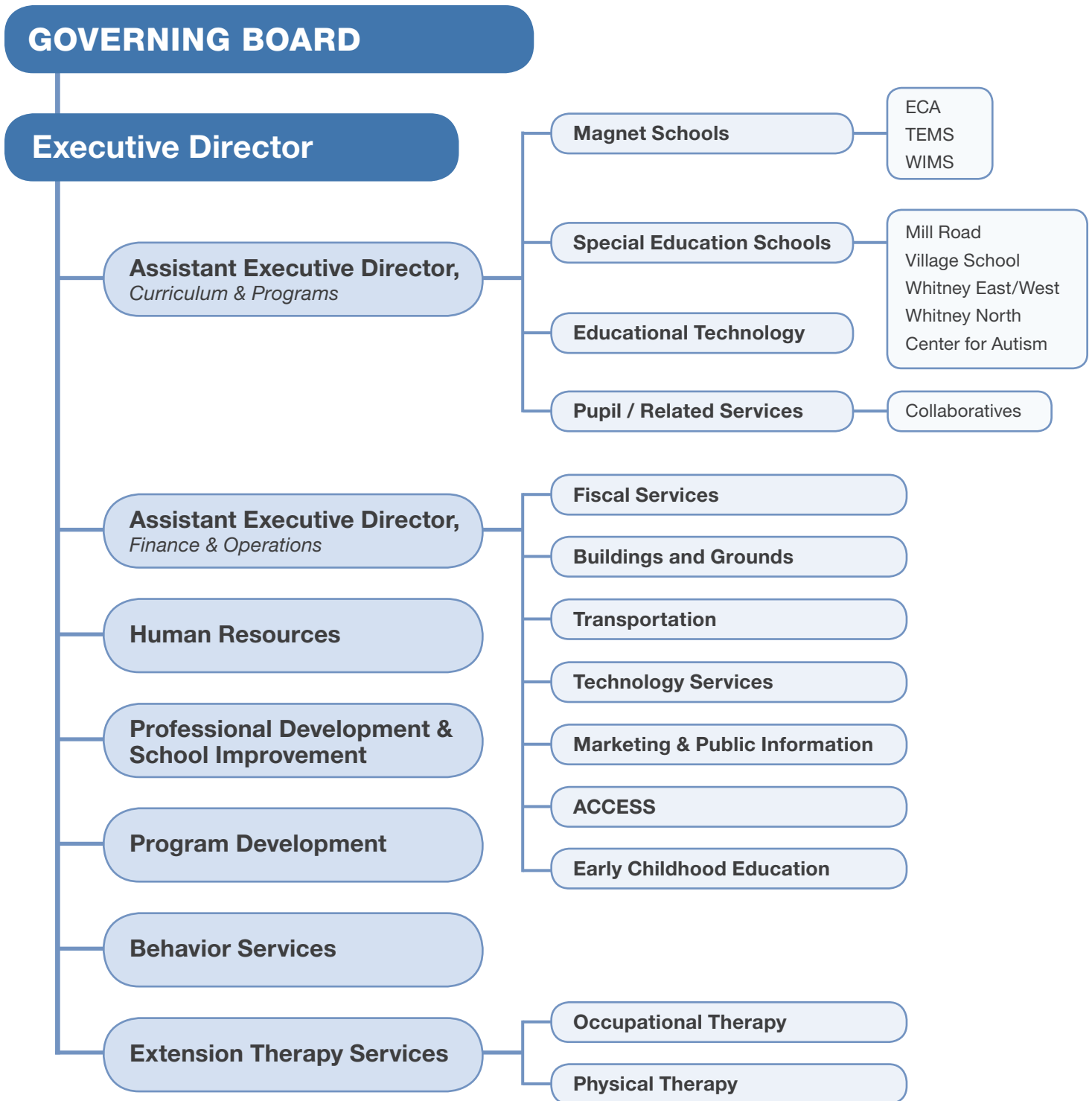
ACES is a member of the Connecticut Alliance of Regional Educational Service Centers and works closely with the other RESCs on collaborative projects.

In 2004 ACES launched the ACES Education Foundation as a separate nonprofit organization. The purpose of the foundation is to identify private sources of funding and raise awareness of the organization’s programs and services. To date the ACES Education Foundation has raised nearly \$700,000 in support of this mission. The New Alliance Foundation and many other business and individual supporters have made generous contributions to realize this effort. This year, the foundation awarded approximately \$37,000 in grants to ACES programs.

### ACES Funding Sources



# 2012-2013 Organizational Chart





## Central Administration

### **Peter C. Young** **Administration Building**

350 State Street  
North Haven, CT 06473  
203.498.6800  
Directions: 203.498.6885

### **Executive Director**

Craig W. Edmondson, Ed.D.  
203.498.6817

### **Assistant Executive Director, Curriculum and Programs**

Ann P. Dombroski, Ed.D.  
203.498.6815

### **Assistant Executive Director, Finance and Operations**

Gary J. Shettle  
203.498.6835

### **Human Resources**

Claudette J. Beamon  
203.498.6810

### **Program Development**

Carolyn McNally, Ed.D.  
203.498.6842

### **Marketing and Public Information**

Evelyn Rossetti-Ryan, Ed.D.  
203.498.6881

## Schools

### **ACES Center for Autism Spectrum and Developmental Disorders**

26 Old Post Road  
Northford, CT 06472  
Linda DeFrancesco  
203.484.9501

### **ACES Educational Center for the Arts**

55 Audubon Street  
New Haven, CT 06510  
Alice L. Schilling  
203.777.5451

### **ACES Mill Road School**

295 Mill Road  
North Haven, CT 06473  
Erika Forte  
203.234.0303

### **ACES Thomas Edison Middle School**

1355 No. Broad Street  
Meriden, CT 06450  
Karen Habegger  
203.639.8403

### **ACES Village School**

31 Temple Street  
North Haven, CT 06473  
Carol Bunk  
203.234.7611

### **ACES Whitney High School West & East**

205 Skiff Street / 261 Skiff Street  
Hamden, CT 06517  
Gina Drury  
203.407.4500 / 203.281.3577

### **ACES Whitney High School North**

205 Skiff Street  
Hamden, CT 06517  
Mark Dougherty  
203.407.4500

### **ACES Wintergreen Interdistrict Magnet School**

670 Wintergreen Avenue  
Hamden, CT 06514  
Suzanne Duran-Crelin  
203.281.9668

## Services

### **Pupil Services and Collaborative Programs**

350 State Street  
North Haven, CT 06473  
Vanessa Taragowski  
203.498.6849

### **Behavior Services**

26 Old Post Road  
Northford, CT 06472  
Donn Sottolano, Ph.D.  
203.484.9501

### **Early Childhood Services**

205 Skiff Street  
Hamden, CT 06517  
Alice Torres, Ed.D.  
203.407.4441

### **Professional Development and School Improvement**

205 Skiff Street  
Hamden, CT 06517  
Frank Meoli  
203.407.4446

### **Extension Therapy Services**

205 Skiff Street  
Hamden, CT 06517  
Laura Evangelist  
203.407.4470

### **ACES ACCESS**

60 United Drive  
North Haven, CT 06473  
Chidi Onukwughu  
203.234.1344

### **ACES Technology Services**

204 State Street  
North Haven, CT 06473  
Greg Dandio  
203.287.6840

### **Educational Technology**

350 State Street  
North Haven, CT 06473  
Wanda Wagner  
203.498.6804

### **ACES Transportation**

60 United Drive  
North Haven, CT 06473  
Dawn Carranzo  
203.234.2406

### **ACES Buildings and Grounds**

60 United Drive  
North Haven, CT 06473  
Joseph Tommaselli  
203.234.1344

---

### **Annual Report Concept & Design:**

Untapped Resources, Inc.  
www.untappedusa.com  
860-379-3379



aces

350 State Street • North Haven, CT 06473

203.498.6800

[www.aces.org](http://www.aces.org)