

aces

NEW HORIZONS

ANNUAL REPORT 2014 - 2015



TABLE OF CONTENTS

Message from the Executive Director	1
Mission/ Organizational Beliefs	2
About ACES	3
ACES Governing Board	4
ACES Member Districts	5
New Horizons: New Leadership Team / Where we Learn	6
New Horizons for ACES Interdistrict Magnet Schools: The CT Coalition for Magnet Schools	7
New Horizons for ACES Interdistrict Magnet Schools	8
New Horizons for ACES Special Education Schools	9
New Horizons for Learning: ACES International	11
New Horizons for Learning: Personalized Learning Opportunities	12
New Horizons for ACES Programs & Services	13
School Improvement Services	14
Regional Educational Programming	15
New Horizons: Diversifying Connecticut's Educational Workforce	16
ACES Convocation 2014	18
ACES 2014-2015 Teacher of the Year Executive Director Recognition Awards Recipients	19
ACES Central Administration	20
The Connecticut RESC Alliance	21
2014-2015 Service Recipients	22
2014-2015 Expenditures	23
2015-2016 Budgets	24
Major Interagency Relationships and Sources of Funding	25
ACES Organizational Chart 2015-2016	26
Directory 2015-2016	27

Area Cooperative Educational Services does not discriminate on the basis of race, color, age, ethnicity, national origin, religion, gender, marital status, disability or sexual orientation.

Copyright © 2015 Area Cooperative Educational Services – This publication is protected by copyright and all rights are reserved. No parts of this document may be reproduced or transmitted in any form or by any means, electronic or mechanical, for any purpose, without the express permission of Area Cooperative Educational Services.

Front Cover Photos: Clockwise: ACES Village School First Day of School; ACES Thomas Edison Middle School Orchestra Musician; ACES Village Preschool Graduate with His Father; ACES Thomas Edison Middle School Student



Greetings:

As Executive Director of Area Cooperative Educational Services (ACES), I am pleased to present the 2014 – 2015 Annual Report, *New Horizons*. I thank our twenty-five member districts and their Board representatives for a very productive year. Also, I extend thanks to ACES Governing Board Chair, Alicia Clapp, who retired after serving on ACES Governing Board for twenty years, and leading us as our Governing Board Chairwoman for three. We will miss her steadfast appreciation to the mission and values of ACES and the students, staff, and districts we serve. I also wish to thank Janet Finneran, ACES Governing Board Member representing Bethany for having served as our Fiscal Officer. In our last 2014-2015 Governing Board meeting, the Board unanimously elected Norman Hicks, our long –time representative from Region 13 to be our next Board Chairman and Judith Hotz, our Branford representative, as Fiscal Officer. We congratulate them on their new appointments and look forward to working with them in their roles.

As leaders and innovators in education, ACES constantly strives to better serve our students, clients, and community. This past year, we set our sights on new horizons by looking to increase international exchanges and collaboration with our districts.

Our new horizons included seeking out and securing new facilities and creating state-of-the-art learning environments for our students. We teamed up with Edgenuity to provide blended learning experiences that combined teacher-supported instruction with an online, personalized learning program. Following are some additional 2014-2015 highlights:

In 2014-2015, we

- Froze our tuition, fee, and service rates for the upcoming 2015-2016 school year.
- Upgraded our current facilities and acquired new facilities to support our growing schools and programs.
- Strengthened our curriculum staff with the hiring of a curriculum director and expanding our curriculum content area coordinators.
- Created assistant director positions for our Professional Development and School Improvement Services and Extension Therapy Services.
- Hired a Director of Facilities to oversee our facilities' expansion.
- Won bonding approval for roof replacements and solar energy installations at ACES Mill Road and ACES Village Schools.
- Created a Director of Talent Development position to expand ACES recruitment initiatives as well as to strengthen our employee retention, development, and growth.
- Developed and launched ACES Summer Academy, a blended learning initiative utilizing Edgenuity's digital learning system.
- Joined with our RESC Alliance and magnet school colleagues and parents to secure funding for our magnet schools.
- Expanded our Minority Teacher Recruitment initiatives thanks to a Minority Teacher Recruitment planning grant from the Connecticut State Department of Education.
- Negotiated successor agreements for ACES to manage ACES Thomas Edison Middle School and ACES Wintergreen Interdistrict Magnet School.

As you read this year's report, I invite you to join me in reflecting on our 2014 – 2015 accomplishments and to look forward with me as we prepare for the challenges and opportunities that lie ahead.

Sincerely,

A handwritten signature in black ink that reads "Thomas M. Danehy". The signature is fluid and cursive.

Dr. Thomas M. Danehy | Executive Director



Dr. Thomas M. Danehy with Alicia Clapp



ACES ACCESS client Sean Bogart with President Barack Obama

MISSION

To empower our students, member districts and other clients to meet educational and life challenges in the changing global environment by providing collaborative, customized, cost effective solutions to meet identified needs in our educational community.

ORGANIZATIONAL BELIEFS

- Each individual has inherent worth
- All individuals can learn
- High expectations and effort are essential for higher achievement
- Quality education provides the foundation for the success of the individual and community
- Diversity strengthens an organization
- Individuals are responsible for their own actions
- Everyone has a responsibility to each other and to contribute to the common good
- Honesty and respect are essential for building trusting relationships
- A positive attitude enhances performance
- Collaboration enhances productivity and generates creativity
- Families are essential partners in education
- The willingness to change is necessary for individuals to grow and organizations to thrive



ABOUT ACES

Area Cooperative Educational Services (ACES) has been living its mission: To empower students, member districts, and others to meet educational and life challenges for close to fifty-years. ACES is the regional educational service center for the twenty-five communities in New Haven County. We are both a school district, serving 2,300 students in our three magnet and five special education schools, and a non-profit service organization.

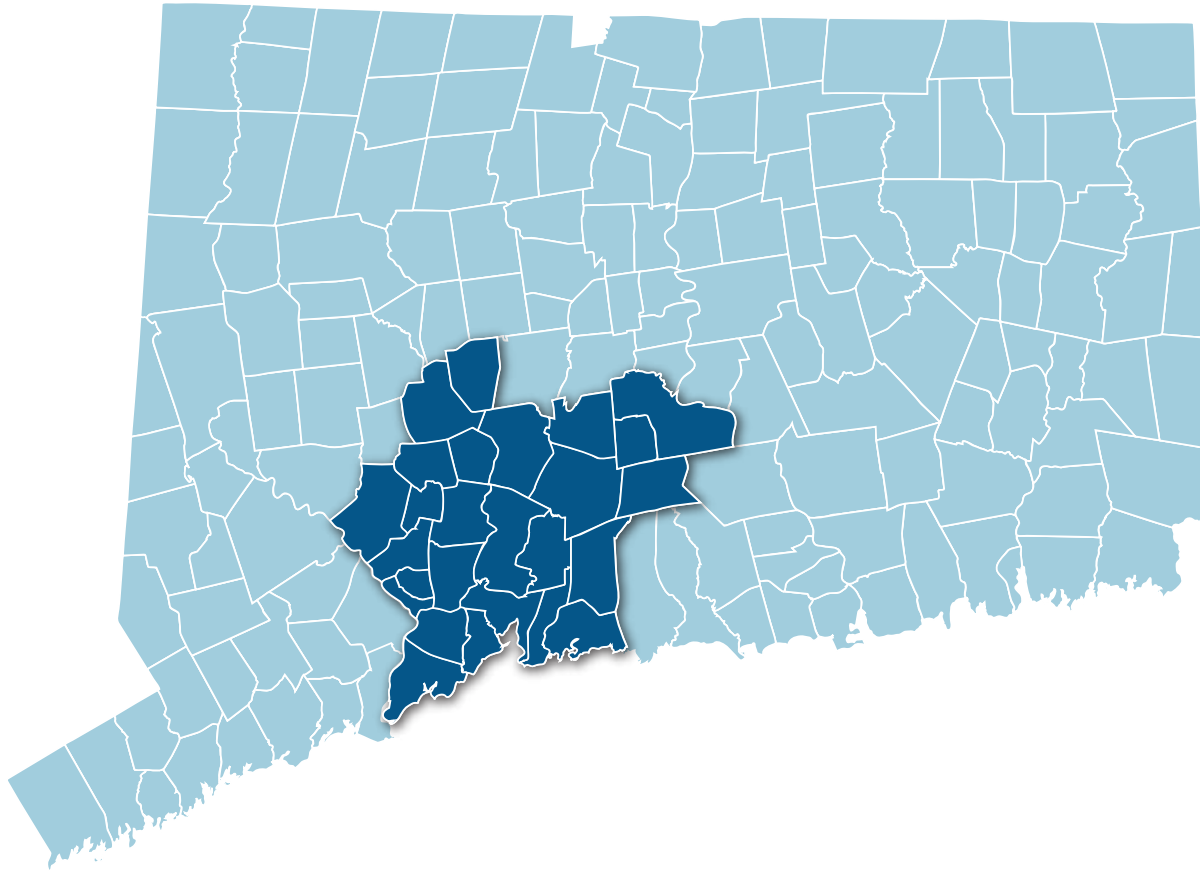
Our broad array of programs and services include adult and vocational programs, Interdistrict programs, early childhood services which includes the ACES Middlesex County Early Head Start Partnership, behavior services for individuals on the autism spectrum, occupational / physical therapy, professional development, and technology services. In 2014, ACES launched ACES International, an international program that provides services to teachers, administrators, and students. Its aim is to cultivate international education and exchange and develop global competency in educators and students.

ACES commitment to equity, diversity, and excellence in education is evident through our leadership of the Open Choice and Magnet School Parent Choice, and Minority Teacher Recruitment initiatives. ACES Open Choice and Magnet School Parent Choice programs provide educational options for families, enabling urban students to attend suburban schools and suburban students to attend urban schools.

In 2015, the Connecticut State Department of Education awarded ACES a planning grant to support the development and implementation of minority recruitment activities. ACES, the lead applicant, worked in tandem with partnering districts: New Haven, Meriden, Norwalk, Waterbury and West Haven. ACES participates in the Regional Educational Service Center (RES-C) Minority Teacher Recruitment Alliance whose purpose is to assist Connecticut school districts in the recruitment, hiring, support and retention of racially, ethnically and culturally diverse teacher and administrator workforce.

Our efforts to engage and support a diversified student body and workforce, and to create equitable, excellent learning centers for all of our constituents, earned ACES the Greater New Haven NAACP's 2015 Educational Leadership Award.

SCHOOL DISTRICT	MEMBER	OFFICE
Ansonia	Fran DiGiorgi	
Bethany	Janet Finneran	Fiscal Officer
Branford	Judith Hotz	Executive Committee
Cheshire	VACANT	
Derby	Ken Marcucio	
East Haven	John Finkle	
Hamden	Lynn Campo	
Meriden	John Lineen Jr.	Executive Committee
Middletown	Vincent Loffredo	
Milford	Earl Whiskeyman	
Naugatuck	Ethel Grant	
New Haven	VACANT	
North Branford	Phil Dahlmeyer	
North Haven	Alicia Clapp	Chair
Orange	Kim Browe	
Oxford	Paula Guillet	
Regional District #5 (Amity)	Sue Cohen	Vice Chair
Regional District #13 (Durham, Middlefield)	Norman Hicks	Executive Committee
Regional District #16 (Prospect, Beacon Falls)	VACANT	
Seymour	VACANT	
Wallingford	Kathy Castelli	
Waterbury	Elizabeth Brown	
West Haven	VACANT	
Wolcott	Roberta Leonard	
Woodbridge	VACANT	



MEMBER DISTRICTS

- | | |
|----------------|--|
| ANSONIA | NORTH HAVEN |
| BETHANY | ORANGE |
| BRANFORD | OXFORD |
| CHESHIRE | REGIONAL DISTRICT #5 (BETHANY, ORANGE, WOODBRIDGE) |
| DERBY | REGIONAL DISTRICT #13 (DURHAM, MIDDLEFIELD) |
| EAST HAVEN | REGIONAL DISTRICT #16 (BEACON FALLS, PROSPECT) |
| HAMDEN | SEYMOUR |
| MERIDEN | WALLINGFORD |
| MIDDLETOWN | WATERBURY |
| MILFORD | WEST HAVEN |
| NAUGATUCK | WOLCOTT |
| NEW HAVEN | WOODBRIDGE |
| NORTH BRANFORD | |



Erika Forte, Norman Hicks, Dr. Thomas Danehy and Claudette Beamon at ACES 2014 Convocation



Karen Sgro, Village Preschool Teacher with William Rice, ACES Director of Curriculum

NEW LEADERSHIP TEAM

This past year, ACES strengthened its educational leadership team by creating a Director of Curriculum position, and four curriculum coordinator positions for English Language Arts, Math, Science and Social Studies. To support ACES external recruitment and employee growth, ACES hired a Director of Talent Development. A Director of Facilities was hired to manage ACES many facilities projects.



30 Lincoln Way, New Haven



ACES Wintergreen Interdistrict Magnet School

WHERE WE LEARN

ACES began 2014-2015 with a Facilities Review Study to assess needs in our current facilities. Building upgrades and repairs included repaired fields at ACES Village School, and ACES Wintergreen Interdistrict Magnet School. ACES Governing Board also approved a new playground for ACES Mill Road School. This past year, ACES won bond approval for roof replacements and solar energy installations at ACES Mill Road School and ACES Village School. Space was leased at 30 Lincoln Way in New Haven to accommodate ACES growing International program and ACES Educational Center for the Arts.

A purchase and sale agreement was signed and a grant was submitted for 80% reimbursement on the Leeder Hill property which will house ACES Whitney High School East/ West, and ACES Whitney High School North.

As a local education agency (LEA), ACES operates a number of schools and educational programs that serve the needs of member school districts across the region. The two primary district needs that we address in our schools are: a) issues of academic achievement stemming from racial, ethnic and economic isolation; and b) educating students whose disabilities pose challenges that exceed the capacity of local districts. In response, we provide rigorous academic curricula through three interdistrict magnet schools that enroll over 1,600 students, and five special education schools that enroll close to 700 students.

NEW HORIZONS FOR INTERDISTRICT MAGNET SCHOOLS THE CT COALITION FOR MAGNET SCHOOLS

This past year, ACES joined with our RESC Alliance and magnet school colleagues and parents to secure funding for our magnet schools. ACES became a partner organization in the CT Coalition for Magnet Schools. Activities included parent outreach and engagement workshops, meetings with legislators and testifying at public hearings and press conferences.

The Coalition's kick-off press conference was covered by NBC News, CTN, The CT Mirror, and it resulted in coverage of the Coalition in the Hartford Courant. Mia Flowers, an 8th grade student at ACES Wintergreen Interdistrict Magnet School spoke on behalf of her magnet school and the need for continued support. Her testimony was picked up by all of the media outlets. Carmen Solomon, a parent of a student at ACES Thomas Edison Middle School testified on January 21, 2015 at the Black and Puerto Rican Caucus public hearing.



“Why hasn’t our state taken action and funded my school? We need funding to support our students to be innovators, problem solvers, peace makers and leaders.”

- MIA FLOWERS | WIMS 8TH GRADE STUDENT





Wintergreen Interdistrict Magnet School



Educational Center for the Arts



Thomas Edison Middle School

NEW HORIZONS FOR ACES INTERDISTRICT MAGNET SCHOOLS

ACES EDUCATIONAL CENTER FOR THE ARTS (ECA)

is a half-day, honors-level, arts magnet high school that draws students from the ACES region and throughout Connecticut. ECA's faculty of professional artists provide a unique and inspiring educational opportunity for creative writers, musicians, actors, visual artists, and dancers. ECA is located in the heart of New Haven's arts community.

ACES THOMAS EDISON MIDDLE SCHOOL (TEMS)

is an Interdistrict magnet school where 6th – 8th grade students focus on science, mathematics and technology. TEMS' mission is to empower teachers and students to use technology effectively in order to become knowledgeable, capable, and ethical digital citizens.

ACES WINTERGREEN INTERDISTRICT MAGNET SCHOOL (WIMS)

is a K – 8 magnet school that is dedicated to educating the whole child through inquiry, innovation and the arts in a diverse, compassionate and mindful learning community. WIMS has a rigorous and engaging curriculum which integrates state of the art technology to teach students how to innovate, collaborate, create and skillfully solve problems.



NEW HORIZONS FOR ACES SPECIAL EDUCATION SCHOOLS

ACES CENTER FOR AUTISM SPECTRUM & DEVELOPMENTAL DISORDERS (CASDD)

is an educational and clinical program serving students ages 11 – 21 with autism spectrum and developmental disorders. CASDD uses the Science-based Approaches to Independence and Life Skills (SAILS) program. Developed at ACES, the SAILS program is based in the science of applied behavior analysis. Staff facilitate student independence through the instruction of academic, community, executive, social, communication, and life skills.

ACES MILL ROAD SCHOOL

is a K-8 school which encompasses two programs: The Mill Road Program and the Urban Youth Elementary Program. The Mill Road Program serves children K-8th grade with serious social, emotional and behavioral difficulties, including students on the autism spectrum. The New Haven Urban Youth Elementary Program, a combined regular K – 5th grade and special education program, serves students with emotional, educational and social issues in an integrated environment.

ACES WHITNEY HIGH SCHOOL EAST & WEST

serves a diverse student population between the ages of 14 and 21. The educational program provides students with all of the necessary supports in order to enhance students' abilities to develop in the areas of vocational/employment, life skills, communication, and social skills. This school year we began the launch of our new design for the transition component of the program, ACES CREATE.



Mill Road School



Whitney High School North

NEW HORIZONS FOR ACES SPECIAL EDUCATION SCHOOLS

ACES WHITNEY HIGH SCHOOL NORTH

provides a positive, therapeutic, individualized and multifaceted program for high school students with significant behavioral, mental health and learning issues. Students participate in a full academic and vocational program which includes a motivational behavioral management system. Instructional methods include frequent assessment of student progress and the expanded opportunity for students to receive remediation. In addition to academics and behavioral support, ACES Whitney High School North features a Literature to Life program, trips to Washington, D.C., Boston and New York as well as the opportunity to take courses at Gateway Community College.

ACES VILLAGE SCHOOL

consists of three units: Early Childhood, Early Intensive Behavior Intervention (EIBI) for students on the autism spectrum, and Elementary/Middle School programs. The Early Childhood unit includes opportunities for integration with typical peers. ACES Village School provides extensive services to children ages 3-14 with a wide range of abilities and complex needs. Related services include speech, physical and occupational therapies, social services, behavioral services, adaptive physical education, music therapy, art therapy and nursing services.

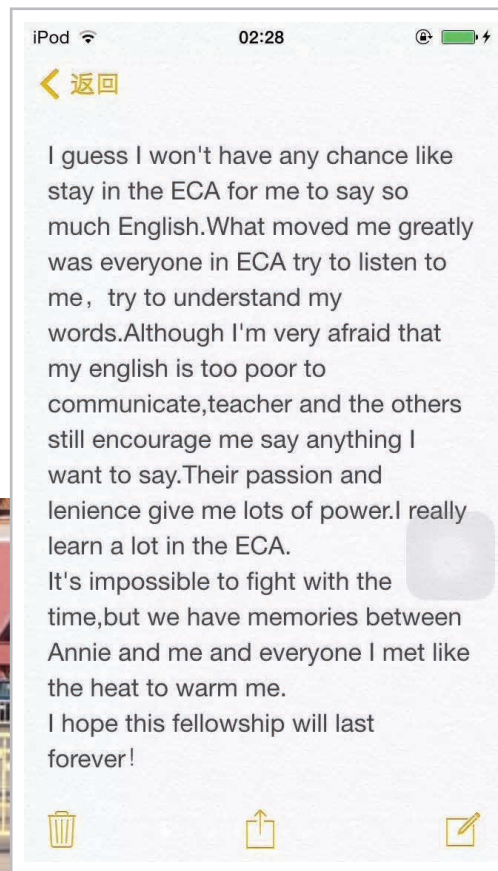


ACES INTERNATIONAL

ACES International is a new initiative that provides professional and program development services internationally. ACES International strives to create an effective global learning environment by providing broad support for global engagement, international – transcultural learning, professional guidance, administrative oversight and program development.

In 2014-2015, ACES educators and administrators traveled to China as part of the Global China Exchange initiative.

This past summer ACES Educational Center for the Arts (ECA) established a Sister School relationship with the Shanghai Theatre Academy Affiliated High School. Shanghai Theatre Academy students and faculty visited ACES ECA during the summer where they participated in classes with ACES ECA students and toured New Haven.





aces summer academy

GET AN EDGE ON LEARNING WITH ACES

ACES SUMMER ACADEMY

ACES Summer Academy, is a blended learning initiative that combined teacher supported-instruction with an online, personalized learning experience. Courses were customized to meet the students' needs and their school's requirements utilizing the Edgenuity online learning program. Credit-recovery as well as enrichment courses were offered. 92% of students who participated in ACES 2015 Summer Academy earned the credits to qualify them for promotion to the next higher grade, moving them one step closer to graduation.



SCHOOL IMPROVEMENT SERVICES

ACES PROFESSIONAL DEVELOPMENT AND SCHOOL IMPROVEMENT (PDSI)

provides cost-effective, customized solutions to meet the needs of our collaborative partners by addressing professional learning at every phase. We work with our regional partner districts, CSDE and other clients to anticipate and identify trends, target and access resources, design and implement initiatives and determine program effectiveness through comprehensive data analysis. Key initiatives include the Educational Policy Fellowship Program, Alternative Route to Certification for Library Media Specialists, Alternative Route to Certification for Teachers of English Language Learners, the Systems of Professional Learning (through a partnership with the RESC Alliance and the CSDE), and our new Coaching Institute.

ACES EARLY CHILDHOOD SERVICES

provides districts and their community partners professional learning opportunities that promote high quality competency based interdisciplinary programming for children birth to age 8. In addition to consultation and training to district leaders and early childhood practitioners, our department supports the design and implementation of aligned early childhood experiences Birth to Grade 3, across multiple systems. Our Middlesex County Early Head Start Partnership is one example of our inter-organizational system approach to providing direct services to children and families. The ACES Middlesex County Early Head Start Partnership, now in its sixth year of federal funding, serves 60 infants/toddlers in six communities. Through regional collaboration, we are able to respond to district and community needs, share best practices, prepare a more qualified workforce, and maximize resources.

ACES 2nd PreK-3rd Grade Summer Symposium: Evidence, Evidence, Evidence: Ensuring Best Practice in the Early Grades

District leaders, early childhood educators, state education agency managers, and institutions of higher education from throughout Connecticut, including Clinton, Enfield, Hamden, Middletown, New Britain, New Haven, Oxford, Seymour, Waterbury, and West Haven, participated in the day-long event. Symposium highlights included presentations by E. Ann Donnery, principal of Darcey School in Cheshire, Dr. Andrea Brinnel from the Connecticut Office of Early Childhood Education, and Suzanne Duran-Crelin, principal of ACES Wintergreen Interdistrict Magnet School in Hamden. Instructional leaders from district and ACES schools facilitated active early learning experiences aligned with the Common Core Standards and CT Early Learning and Development Standards. The CSDE Evidence Guides were reviewed to guide classroom observations in the early grades.

SCHOOL IMPROVEMENT SERVICES

ACES BEHAVIOR SERVICES AND AUTISM PROGRAMS (BSAP)

provides direct and support services for schools, organizations, and families in south central Connecticut. The services involve behavioral assessment, support plan management and implementation, intensive instructional programming, and staff training/development. Behavior Analysts, ABA Trainers, and Behavior Technicians join with other team members within schools at ACES and beyond to provide effective educational solutions and opportunities. ACES Behavior Services and Autism Programs also provides regional professional development opportunities. In 2014-2015, ACES Behavior Services and Autism Programs launched its Behavior Analysis in Education Series. The ACES Behavior Analysis in Education Series (BAES) involving low cost, high quality presentations from state, regional, and national experts will continue in 2015-2016. These services together with ACES' Home Outreach, complete a continuum of high quality, behavior analytic support to students, districts, and families.

ACES EXTENSION THERAPY SERVICES

provides contractual occupational therapy and physical therapy to member school districts, local private schools and agencies. Services are provided as a related service when deemed necessary for a special education student to participate in his and/or her educational curriculum and also to provide, as requested by the LEA or school, support to the general education curriculum. In 2014-2015, Extension Therapy Services provided services to 1,537 students, 109 schools, and 16 districts and agencies.

ACES TECHNOLOGY SERVICES

supports highly technical infrastructures through network administration; data support; and desktop helpdesk services. Services are provided to ACES schools and programs and through contracted services with our member districts. In 2014-2015, ACES Technology Services began the implementation of Google Apps for Education. This cloud platform allows educators and students to collaborate on assignments and work in a more efficient and paperless environment. We also ensured that ACES schools were properly equipped for the successful administration of computerized, standardized testing (SBAC). Additional 2014-2015 ACES Technology Services highlights include: ACES intranet and staff collaboration platform, SharePoint, was updated to the latest version. A new three-year Technology Plan was formulated. Data was gathered regarding our current use of technology and our future needs. Focus groups of stakeholders were held to assure that a good cross-section of the organization was represented. Goals and action plans were put in place to shape the future of technology at ACES.

ACES TRANSPORTATION SERVICES & FACILITIES

provides transportation for students and adults to and from ACES facilities as a contractual service to our local school districts and agencies. In addition, Transportation Services & Facilities maintains the safety and security of ACES buildings. In 2014-2015, we purchased five new vans to better accommodate our districts, students and families.

REGIONAL EDUCATIONAL PROGRAMMING

ACES OPEN CHOICE

was established in 1996, and provides options for families to choose available openings in urban (New Haven) and suburban schools in the ACES region. In 2014-2015, 468 students, 61 schools and 14 school districts participated in this program.

ACES MAGNET SCHOOL PARENT CHOICE

is coordinated by ACES Program Development department for the ACES region. Families in any non-partner school district can apply to a lottery for open seats in ACES WIMS or TEMS. Families provide student transportation, with a travel subsidy provided by ACES.

ACES INTERDISTRICT COOPERATIVE GRANT (IDCG)

program is funded by the Connecticut State Department of Education's Interdistrict Cooperative Grant Program. Its goals are to increase student achievement and to reduce racial, ethnic and economic isolation. In 2014-2015, ACES coordinated six programs that engaged 1,400 students in 17 districts.

ACES - WEST HAVEN HIGH SCHOOL COLLABORATIVE

provides educational services to fifteen students identified with Intellectual Disabilities at West Haven High School. Daily programming includes academic, vocational, and social skills instruction.

ACES SCHOOL PROGRAM AT YALE NEW HAVEN HOSPITAL, ST. RAPHAEL CAMPUS

fills a critical gap in the hospital's inpatient mental health services for school age children. The program keeps students in the care of the hospital's Children's Psychiatric Emergency Services (CPES) on pace academically. The program supports the transition of students in and out of the hospital by serving as a liaison between the family, school and CPES. Daily group and individualized instruction are delivered by a certified special education teacher.

ACES ACCESS

supports the career development and transition for a multi-challenged adult population ages 21 and above. The program provides vocational training and support to adults with disabilities in Greater New Haven in the areas of individual employment, group supported employment, and volunteer services. ACES ACCESS has three ventures, United Lawn Care, Designs by ACCESS and office cleaning. This past year, both United Lawn Care and Designs by ACCESS continued to grow in 2014-2015, ACES hired ACES ACCESS clients to mow the lawns at some of our properties and do the mail for our schools and programs.

MINORITY TEACHER RECRUITMENT PLANNING GRANT

In 2014-2015, ACES received a \$25,000 planning grant from the Connecticut State Education Department to support recruitment of minorities to the field of education based on the need for strong educational leadership and under-representation in the field. ACES and partner districts, Hamden, Meriden, New Haven and Norwalk used the funds to plan activities that raised awareness of careers in education and strengthened the recruitment of Black and Latino candidates.

ACES BRINGS MY BROTHER'S KEEPER TO WILBUR CROSS HIGH SCHOOL, NEW HAVEN

ACES My Brother's Keeper (MBK) mentoring initiative was developed in response to President Barack Obama's MBK Community Challenge, which encourages communities to implement strategies that "improve the life outcomes of all young people and to ensure that they can reach their full potential, regardless of who they are, where they come from, or the circumstances into which they are born."

This initiative was a collaborative mentoring partnership between ACES and Wilbur Cross High School for students who were in danger of falling through the cracks as a result of poor attendance, disruptive behavior and / or failing grades. Workshop topics included self-esteem, discussions on personal morals or values, decision-making, career and college choices, military exploration, and mental health issues.



KEVIN WALTON,
ACES HR SPECIALIST, MTR COORDINATOR



DR. EDWARD JOYNER
KEYNOTE SPEAKER

FUTURE EDUCATORS SYMPOSIUM

On April 23, 2015 the ACES MTR Advisory Council, in conjunction with the Southern Connecticut State University School of Education hosted the 2nd Annual Future Educators' Symposium on the campus of Southern Connecticut State University. The event brought over 100 students and chaperones together from ACES, Hamden, New Haven, Waterbury, Meriden and Norwalk. The purpose of the Future Educators' Symposium was to introduce male high school students of color to the education profession and to inspire and motivate young men of color to consider pursuing education as a career choice. Program participants had the opportunity to participate in several activities throughout the day including a panel discussion with current male educators of color, a keynote speaker and inter-active breakout sessions. Students were able to share their thoughts and ideas about the profession within small groups as well as the larger audience.



Waterbury Public School Students at 2015
Future Educators' Symposium



Hamden Public School Students at 2015
Future Educators' Symposium



New Haven Public School Students at 2015
Future Educators' Symposium



Norman Hicks, ACES Governing Board Member



ACES Whitney High School East/West Marching Band



ACES Mill Road School Faculty

ACES CONVOCATION 2014 CULTIVATING A COMMUNITY OF CARING

On Tuesday, November 4, 2014, employees gathered at ACES Thomas Edison Middle School for Convocation 2014, Cultivating a Community of Caring. A highlight of the day was a video (include link to the video) that brought ACES organizational beliefs to life. Spearheaded by Claudette Beamon, ACES Assistant Executive Director for Personnel and Special Services, the video involved many ACES employees. The following employees were part of the video's planning committee: Carol May, Coordinator, ACES Wintergreen Interdistrict Magnet School, Eric Carson, ACES Village School, Rebecca Cuevas, Early Childhood Services, Cyndi Giordano-Donati, Behavior Services, Janet Gray, ACES Whitney High School East/West, Wallis Hendon, Extension Therapy Services, Erika Henley, ACES Mill Road School, Joan Hillo, Professional Development and School Improvement Services, Michael LaCroix, ACES Whitney High School North, Michael Lerner, ACES Educational Center for the Arts, Lisa Nikiforuk, ACES Center for Autism Spectrum and Developmental Disorders, Lauren Otto, ACES Thomas Edison Middle School, and Kim Wallis, ACES ACCESS. Video producer, Greg Novak had been an Individual Aide at ACES Village School prior to starting his video production company.

ACES 2014-2015 TEACHER OF THE YEAR EXECUTIVE DIRECTOR
RECOGNITION AWARD RECIPIENTS



ACES 2014-2015 Teacher of the Year, Victoria Hulse with Carissa Lockett, ACES 2013-2014 Teacher of the Year



EDRA 2014-2015 Recipient Lisa Nikiforuk, ACES Center for Autism Spectrum and Developmental Disorders



EDRA 2014-2015 Recipient Pamela Davis with Timothy Howes, ACES Assistant Executive Director for Finance and Operations and Steven Manley, Director Technology Services



Jo-Anne Cegan, ACES Director, Fiscal Services with EDRA 2014-2015 Recipient Mary Esposito, ACES Fiscal Services



EDRA 2014-2015 Recipient Vicki Horowitz, ACES Extension Therapy Services



EDRA 2014-2015 Recipient, Stephanie Nix, ACES Whitney High School North

ACES CENTRAL ADMINISTRATION is dedicated to providing the sound technology, administration, fiscal and related services necessary to carry out ACES mission and goals. Central Administration oversees the smooth and efficient operation of our agency.

EXECUTIVE DIRECTOR serves as the Chief Executive Officer of ACES as a regional service agency and as the Superintendent of ACES schools.

ASSISTANT EXECUTIVE DIRECTOR FOR CURRICULUM AND PROGRAMS oversees the development, delivery, and assessment of teaching and learning within ACES schools and educational programs.

ASSISTANT EXECUTIVE DIRECTOR FOR FINANCE AND OPERATIONS oversees the agency's Fiscal Services, Buildings and Grounds, Transportation Services, Technology Services, and all outsourced food services, and serves as a risk manager for the agency's insurances.

ASSISTANT EXECUTIVE DIRECTOR FOR PERSONNEL AND SPECIAL SERVICES oversees the following divisions: Behavior Services, Extension Therapy Services, Professional Development & School Improvement, Talent Development and the Human Resources department.

FISCAL SERVICES processes all purchase orders and invoices for our \$80 million budget and biweekly payroll for 950 employees.

HUMAN RESOURCES manages recruitment and hiring, benefits administration, labor relations, fingerprinting services and minority teacher recruiting for ACES school districts.

COMMUNICATIONS AND PUBLIC RELATIONS seeks to increase the organization's visibility across the region and oversees the production of all internal and external publications.

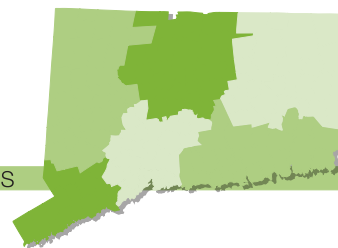
PROGRAM DEVELOPMENT creates new ACES programs to respond to the needs of ACES schools and those of its member districts, secures resources to pilot, expand and sustain quality educational programs, participates in community leadership initiatives, implements equity initiatives at ACES, and convenes and supports the ACES Education Foundation.

PUPIL-RELATED SERVICES provide ACES internal schools with specialized services such as social work, developmental guidance, psychology services, speech, physical and occupational therapies nursing and psychiatric counseling services.

ASSISTIVE TECHNOLOGY SERVICES address the needs of local school districts through a team-oriented decision making process in the assessment, selection, acquisition and use of assistive device(s).

the RESC Alliance

CONNECTICUT ALLIANCE OF REGIONAL SERVICE CENTERS



THE CONNECTICUT RESC ALLIANCE

ACES is one of six regional educational service centers (RESCs) in Connecticut. All RESCs support Connecticut school districts' instructional and operational components. The RESC Alliance works collaboratively to develop and deliver high-quality, cost-effective collaborative programs and initiatives. For additional information on the RESC Alliance, go to www.rescalliance.org.



	Ansonia	Bethany	Branford	Cheshire	Derby	East Haven	Hamden	Meriden	Middletown	Milford	Naugatuck	New Haven	North Branford	North Haven	Orange	Oxford	Seymour	Wallingford	Waterbury	West Haven	Wolcott	Woodbridge	Reg Dist #5	Reg Dist #13	Reg Dist #16	ACES Programs	Other (#)
SPECIAL EDUCATION SCHOOLS																											
CASDD	*				*	*	*		*			*	*	*			*		*		*						6
Mill Road School	*		*		*	*	*	*	*	*	*		*	*	*	*	*	*	*	*	*	*					9
Village School	*		*		*	*	*	*	*			*		*	*	*	*	*	*	*	*		*				23
Whitney East/West	*		*	*	*	*	*	*	*	*		*	*	*	*	*	*	*	*	*			*		*		16
Whitney North	*		*		*	*	*	*	*	*	*		*	*				*	*	*			*				12
MAGNET SCHOOLS																											
ECA	*		*	*		*	*	*	*	*		*	*	*		*	*	*		*	*		*		*	*	6
TEMS								*	*		*		*					*	*					*			1
WIMS			*	*	*	*	*	*		*	*	*	*					*		*		*					1
SERVICES																											
ACCESS			*			*	*	*		*		*		*	*			*		*							
Behavior Services	*	*	*		*	*		*	*	*		*	*	*							*					*	5
Early Childhood	*			*	*	*	*	*	*	*		*	*					*	*	*	*				*	*	5
Extension Therapy	*	*	*		*	*		*			*	*		*	*		*			*		*	*		*	*	2
YNNH, Hospital of St. Raphael	*		*	*	*	*	*	*	*	*	*	*	*	*	*	*	*	*	*	*	*	*	*	*	*	*	58
In-District Collaboratives					*															*							
Minority Teacher Recruitment						*	*	*			*							*	*	*						3	
Open Choice	*	*	*	*		*	*		*		*	*	*	*	*		*		*	*	*	*	*	*	*	*	
PDSI	*	*	*	*	*	*	*	*	*	*	*	*	*	*	*	*	*	*	*	*	*	*	*	*	*	*	87
Program Development	*	*	*	*	*	*	*	*	*	*		*	*	*	*	*	*	*	*	*	*	*	*	*	*	*	5
Pupil-Related Services	*		*	*		*	*	*	*	*	*	*	*	*	*	*	*	*	*	*	*		*				23
Assistive Technology	*	*				*	*	*				*		*	*		*		*	*	*	*	*	*	*	*	2
Technology Services	*	*	*				*	*										*	*	*		*		*	*	4	
Transportation	*		*		*	*	*	*	*	*		*	*	*	*			*		*	*	*					1

2014-2015 EXPENDITURES

PROGRAM/DESCRIPTION	SOURCE	BUDGET	EXPENSE
INSTRUCTIONAL PROGRAMS			
SPECIAL EDUCATION			
1003 Mill Road	L	6,661,456	6,402,827
1007 SAILS-Intensive	L	4,160,885	3,450,451
1060 Summer School	L	2,103,628	2,103,628
1040 Transportation	L	2,686,158	2,546,369
1005 Village EIBI	L	4,039,958	3,490,005
1004 Village School	L	6,033,737	5,662,418
1013 West Haven High Program	L	439,523	384,787
1001 Whitney High School East & West	L	8,165,141	7,690,902
1011 Whitney High School North	L	4,437,254	4,204,010
		\$ 35,935,397	

PROGRAM/DESCRIPTION	SOURCE	BUDGET	EXPENSE
MAGNET SCHOOLS			
1203 Educational Center for the Arts	S,L	2,829,547	2,774,505
2405 Magnet Transportation-WIMS	S	229,790	299,123
1412 Project Lead The Way	L	100,085	84,324
1210 Thomas Edison Middle School	S,L	9,757,013	9,089,240
2230 Title I Improving Basic Programs 6/14	F	372,405	301,174
2238 Title I Improving Basic Programs 6/15	F	83,662	83,662
2637 Title II A Teachers 6/14	F	55,789	-
2239 Title II A Teachers 6/15	F	28,025	28,025
1205 Wintergreen Magnet School	S,L	7,658,390	7,339,197
		\$ 19,999,250	

PROGRAM/DESCRIPTION	SOURCE	BUDGET	EXPENSE
REGULAR EDUCATION			
1227 New Haven FY14 to FY15 Carryover	O	650,862	509,167
1219 New Haven Magnet Schools	L	552,000	550,945
1206 NH Betsy Ross Arts Magnet School	L	1,170,062	729,694
1204 NH Cooperative High School	L	547,693	396,238
1214 St. Raphael's Instructional	L	134,578	117,147
1218 Urban Youth	L	1,179,750	1,148,881
		\$ 3,452,072	

PROGRAM/DESCRIPTION	SOURCE	BUDGET	EXPENSE
INTERDISTRICT PROGRAMS			
2640 LUCID	S	97,000	97,000
2209 Math Counts	S	89,639	81,806
2406 Minority Teacher Recruitment	S	25,000	25,000
1672 My Brothers Keeper	O	15,000	1,798
2207 Sharing Our Stories	S	58,046	58,046
2211 Sister Schools	S	72,545	72,545
2208 The Write Stuff	S	122,707	101,209
2212 World & English Language Learners	S	69,188	60,949
		\$ 498,353	
TOTAL INSTRUCTIONAL PROGRAMS		\$ 59,885,072	

PROGRAM/DESCRIPTION	SOURCE	BUDGET	EXPENSE
PUPIL PERSONNEL & SUPPORT SERVICES			
1105 Assistive Technology	L	245,111	230,864
2270 Asthma Initiatives	L,O	40	-
1103 Behavioral Services	L	1,821,952	2,178,857
1102 Extension Therapy Services	L	2,914,503	2,963,335
1101 Pupil Services	L	731,453	764,849
1613 Student Career & Curriculum Services	L	474,571	363,480
TOTAL PUPIL PERSONNEL & SUPPORT SERVICES		\$ 6,501,385	

PROGRAM/DESCRIPTION	SOURCE	BUDGET	EXPENSE
EARLY CHILDHOOD - EXTERNAL			
1801 Early Childhood Services	S,L,O	413,562	342,757
1802 Early Childhood Middletown	L		12,363
2810 Early Head Start 1/15 - 12/15	F	862,335	385,160
2812 Early Head Start 1/14 - 12/14	F	486,434	486,434
2851 East Haven Discovery Grant	O	9,779	7,994
2854 East Haven United Way	O	556	556
2855 East Haven-Circle of Security	O	2,859	-
1803 Middletown QE	L	18,000	18,000
1806 New Haven QE II	L	13,000	9,814
1809 West Haven QE	L	13,318	13,311
TOTAL EARLY CHILDHOOD-EXTERNAL		\$ 1,276,389	

PROGRAM/DESCRIPTION	SOURCE	BUDGET	EXPENSE
PROFESSIONAL DEVELOPMENT PROGRAMS			
1603 ACES Curriculum	L	917,940	811,212
1617 ACES ICES Program	O	48,889	29,612
1616 ACES Internal Professional Development	L	126,714	116,120
1624 Adv. Alt. Prog.-Library Media Spec.	L	179,306	154,372
2687 Alliance Priority Dstr Plan	S	23,538	23,538
2652 ARCTELL	L	119,194	51,381
1625 ARCTELL - Hartford	L	89,743	89,743
2662 ARCTELL/Statewide ELL 8/30/15	S	97,648	93,630
2619 Assessment Reduction Grant	S	10,000	10,000
1604 Conference Management	S,L,O	136,110	94,163
1631 Curriculum Consortium 3.0	L	161,658	151,332
2633 EPPP-Title II Part A Teachers	S,L	28,345	18,001
2310 Nellie Mae Leadership	O	25,000	25,000
1649 New Haven Action Research	L	50,000	50,000
1641 New Haven Supp. SIG Funds	S	84,880	25,083
1644 New Haven TEAM Support	L	1,149,058	575,660
1652 PDSI Conference Services	L	63,901	46,558
1658 PDSI District Agent	L	18,522	15,510
1671 Personalized Learning	L,O	39,261	39,261
1606 Priority Schools	L	85,596	72,033
1602 Professional Development/School Improvement	S,L,O	1,999,874	1,673,541
1643 Review of New Haven Beginning Tchr	S	19,750	5,951
2684 Smarter Balanced Event Management	S	107,332	107,332
2683 State Personnel Development	O	21,000	21,000
2653 State-Wide Pilot-Educator Evaluations	S	76,936	76,936
2685 Systems of Prof Learning	S	1,173,162	1,173,162
1636 Title II Tech	F	3,192	150
2649 Title III A English Acq. 6/16	F	43,051	19,966
2651 Title III A English Acq. 6/15	F	6,740	6,740
2682 Title III ELL	F	11,757	11,757
1656 Virtual High School	L	19,700	19,700
TOTAL PROFESSIONAL DEVELOPMENT PROGRAMS		\$ 5,608,444	

PROGRAM/DESCRIPTION	SOURCE	BUDGET	EXPENSE
RESC ENTITLEMENTS			
2401 Administering Open Choice	S	181,379	181,379
2404 Choice Transportation	S	2,348,466	2,254,343
TOTAL RESC ENTITLEMENTS		\$ 2,435,722	

PROGRAM/DESCRIPTION	SOURCE	BUDGET	EXPENSE
CAREER SERVICES			
1504 ACCESS-Supported Employment	S,O	2,152,548	2,046,923
1550 Vocational Support Services	L,O	150,000	131,733
2109 Workforce Alliance Summer-State	O	40,000	39,892
TOTAL CAREER SERVICES		\$ 2,218,548	

GRAND TOTAL 2014-2015:	BUDGET: \$84,444,179	EXPENSE: \$77,925,560
-------------------------------	-----------------------------	------------------------------

Budget Included in Above:		
Central Office (1401-1410)		7,783,268
Building Operations (1301-1360)		9,708,887
Magnet School Operating Grants		12,382,460
Misc. Grants (Funding not guaranteed on an annual basis)		657,462

LEGEND OF FUNDING SOURCES

L: Local **F:** Federal **S:** State **O:** Other

PROGRAM/DESCRIPTION	SOURCE	BUDGET
INSTRUCTIONAL PROGRAMS		
SPECIAL EDUCATION		
1003 Mill Road	L	7,225,925
1007 SAILS-Intensive	L	4,547,563
1060 Summer School	L	2,250,882
1040 Transportation	L	2,614,288
1005 Village EIBI	L	4,342,976
1004 Village School	L	6,245,551
1013 West Haven High Program	L	556,438
1001 Whitney High School East & West	L	8,165,407
1011 Whitney High School North	L	4,628,098
		\$ 40,577,128

PROGRAM/DESCRIPTION	SOURCE	BUDGET
MAGNET SCHOOLS		
1203 Educational Center for the Arts	S,L	2,923,537
2405 Magnet Transportation	S	200,500 *
1412 Project Lead the Way	L	59,394
1210 Thomas Edison Middle School	S,L	10,117,537
2238 Title I Improving Basic Programs 6/17	F	372,405 *
2230 Title I Improving Basic Programs 6/16	F	71,231
2239 Title II A Teachers 6/17	F	55,000 *
2637 Title II A Teachers 6/16	F	55,789
1205 Wintergreen Magnet School	S,L	7,840,062
		\$ 21,695,455

PROGRAM/DESCRIPTION	SOURCE	BUDGET
REGULAR EDUCATION		
1227 New Haven FY15 Carryover	O	765,442 *
1219 New Haven Magnet Schools	L	520,000 *
1206 NH Betsy Ross Arts Magnet School	L	699,702 *
1204 NH Cooperative High School	L	457,670 *
1214 St. Raphael's Instructional	L	141,726 *
1218 Urban Youth	L	1,179,750 *
		\$ 3,764,290

PROGRAM/DESCRIPTION	SOURCE	BUDGET
INTERDISTRICT PROGRAMS		
2641 IRISS (Inquiry, Research, Investigation)	S	130,592
2640 LUCID	S	122,598
1672 My Brother's Keeper	O	13,000 *
1671 Personalized Learning	L	50,000 *
2642 STEM Explorations	S	52,346
2212 World & English Language Learners	S	42,297
		\$ 410,833
TOTAL INSTRUCTIONAL PROGRAMS		\$ 66,447,706

PROGRAM/DESCRIPTION	SOURCE	BUDGET
PUPIL PERSONNEL & SUPPORT SERVICES		
1105 Assistive Technology	L	336,083
1103 Behavioral Services	L	2,746,628
1102 Extension Therapy Services	L	3,602,968
1101 Pupil Services	L	725,171
1613 Student Career & Curriculum Services	L	445,808
		\$ 7,856,658

PROGRAM/DESCRIPTION	SOURCE	BUDGET
EARLY CHILDHOOD - EXTERNAL		
1801 Early Childhood Services	S,L,O	403,283
1802 Early Childhood Services - Middletown	L	50,000
2812 Early Head Start 1/16-12/16	F	862,335 *
2810 Early Head Start 1/15-12/15	F	477,176
2851 East Haven Discovery Grant	O	9,784
2855 East Haven-Circle of Security	O	2,859
1803 Middletown QE	O	18,000 *
1806 New Haven QE II	L	15,000 *
1809 West Haven QE	L	13,000 *
		\$ 1,851,437

PROGRAM/DESCRIPTION	SOURCE	BUDGET
PROFESSIONAL DEVELOPMENT PROGRAMS		
1603 ACES Curriculum	L	917,940
1617 ACES International	O	19,277
1616 ACES Internal Professional Development	L	126,714 *
1624 Adv. Alt. Prog.-Library Media Spec.	L	235,009
2652 ARCTELL	L, O	153,963 *
1625 ARCTELL - Hartford	L	95,000
1627 ARCTELL - New Haven	L	95,000
1626 ARCTELL - Norwich Free Academy	L	95,000
2662 ARCTELL/Statewide ELL	S	250,761
1604 Conference Management	S,L,O	100,082
1631 Curriculum Consortium 3.0	L	106,370
2633 EPPP-Title II Part A Teachers	S,L	10,844 *
2310 Nellie Mae Leadership Grant	O	25,000
1649 New Haven Action Research	L	50,000 *
1641 New Haven Supplemental SIG Funds	L	59,798
1644 New Haven TEAM Support	L	573,398
1642 NHPS Transition Services	L	9,960
1652 PDSI Conference Services	L	56,468
1658 PDSI District Agent	L	650
1606 Priority Schools	L	16,563
1602 Professional Development/School Improvement	S,L,O	2,336,304
2653 State-Wide Pilot-Educator Evaluations	S	39,807
2685 Systems of Prof Learning	S	785,642
1636 Title II Tech	F	3,042
2651 Title III A English Acq. 6/17	F	43,000 *
2649 Title III A English Acq. 6/16	F	23,085
1656 Virtual High School	L	19,700 *
TOTAL PROFESSIONAL DEVELOPMENT PROGRAMS		\$ 6,248,017

PROGRAM/DESCRIPTION	SOURCE	BUDGET
RESC ENTITLEMENTS		
2401 Administering Open Choice	S	183,515
2404 Choice Transportation	S	1,712,750 *
TOTAL RESC ENTITLEMENTS		\$ 1,896,265

PROGRAM/DESCRIPTION	SOURCE	BUDGET
CAREER SERVICES		
1504 ACCESS-Supported Employment	S,O	2,599,814
1550 Vocational Support Services	L,O	150,000
2109 Workforce Alliance Summer-State	O	33,500
TOTAL CAREER SERVICES		\$ 2,783,314

GRAND TOTAL 2015-2016 BUDGETS	\$87,083,397
--------------------------------------	---------------------

Budget Included in Above:		
Central Office (1401-1410)		8,320,968
Building Operations (1301-1360)		9,617,611
Magnet School Operating Grants		12,382,460 *
Misc. Grants (Funding not guaranteed on an annual basis)		225,806 *

* Estimated Grants Budgets

LEGEND OF FUNDING SOURCES

L: Local **F:** Federal **S:** State **O:** Other

MAJOR INTERAGENCY RELATIONSHIPS AND SOURCES OF FUNDING

ACES maintains strong relationships with the school districts that created and govern the organization. This connection with member districts, plus other local funds, accounts for approximately 71.1% of ACES financial support. Programs ranging from education for students with cognitive, emotional and physical challenges to training programs for staff from the school districts are financially supported by the member school districts through tuition and fees for services.

The second major source of support is the Connecticut State Department of Education (CSDE). ACES receives grants and contracts primarily for state initiatives, such as the Magnet School initiative, Interdistrict Grants, the Open Choice program, Professional Development Activities, School Construction Projects, Enhancing Education Through Technology, and School Readiness programs.

These programs have an impact on both school districts and local communities. This support accounts for approximately 23.40% of ACES income.

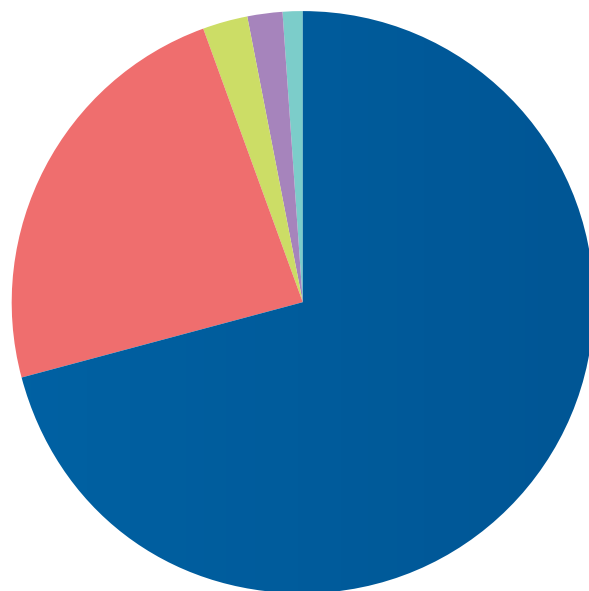
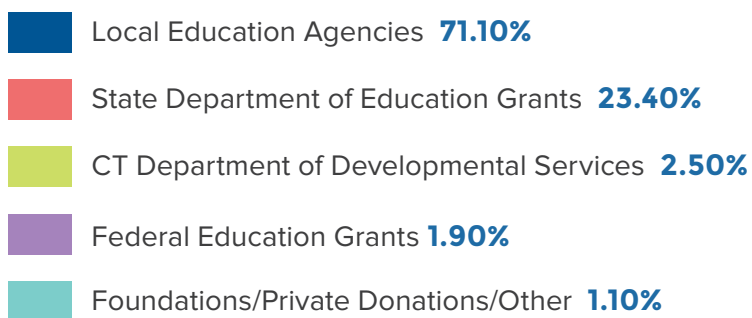
The third major ACES interagency relationship involves the Connecticut Department of Developmental Services (DDS). ACES principal involvement with this agency is through programs for disabled adults. This funding represents approximately 2.5% of ACES budget.

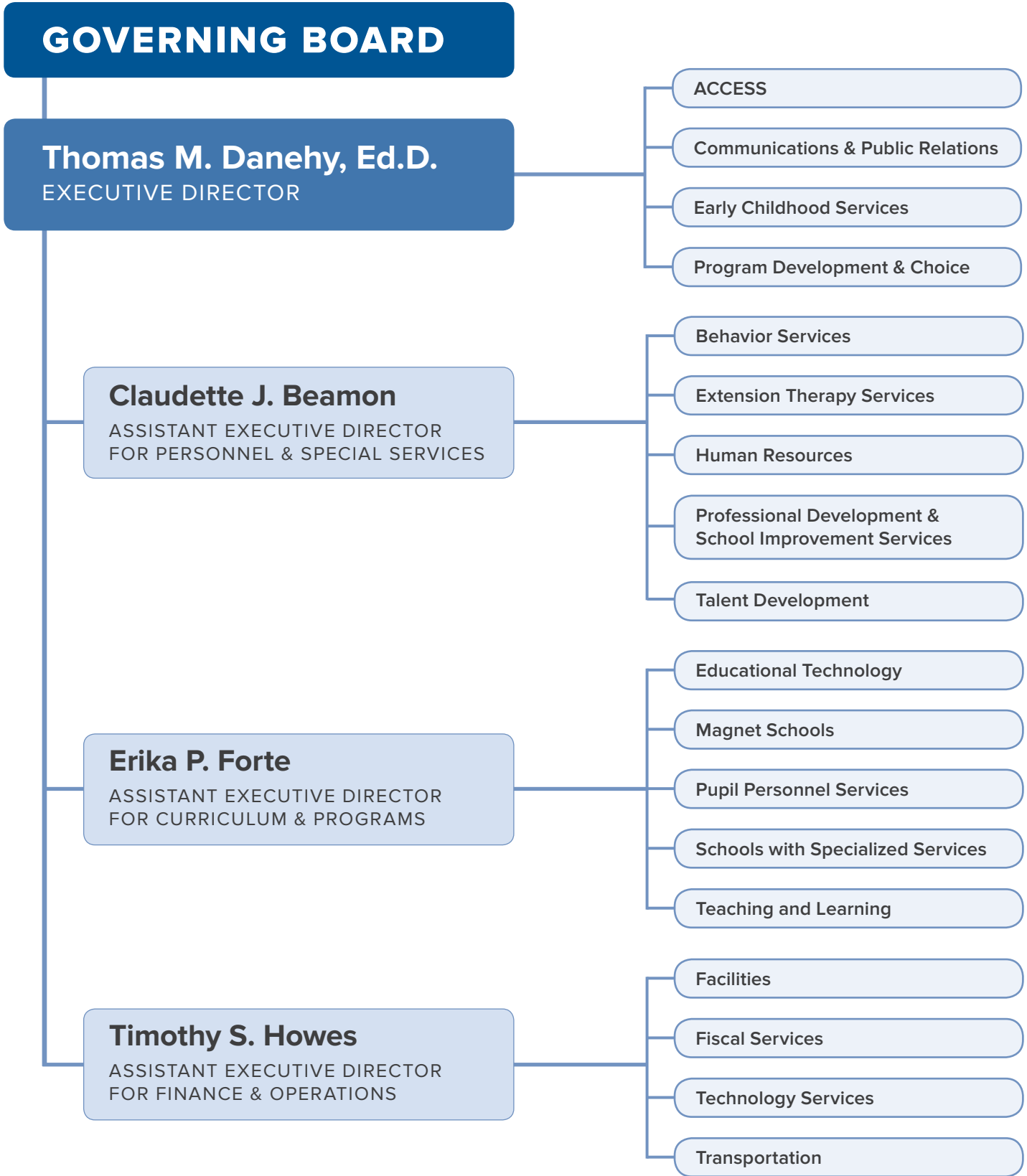
The fourth major source of support for ACES programs is federal funding through grants for educational programming. This source accounts for 1.9% of the total budget.

The final category of major revenue is from private sources in the form of grants from charitable foundations and other special contracts. These grants and “other” contracts represent approximately 1.10% of the ACES annual budget.

ACES is a member of the Connecticut Alliance of Regional Educational Service Centers and works closely with the other RESCs on collaborative projects.

ACES FUNDING SOURCES





CENTRAL ADMINISTRATION

Peter C. Young Administration Building

350 State Street
North Haven, CT 06473
203.498.6800
Directions: 203.498.6885

Executive Director

Thomas M. Danehy, Ed.D.
203.498.6817

Assistant Executive Director, Personnel and Special Services

Claudette J. Beamon
203.498.6810

Assistant Executive Director, Curriculum and Programs

Erika P. Forte
203.498.6815

Assistant Executive Director, Finance and Operations

Timothy Howes
203.498.6838

Communications and Public Relations

Evelyn Rossetti-Ryan, Ed.D.
203.498.6881

Curriculum

William Rice
203.498.6868

Facilities

Timothy Gunn
203.498.6839

Program Development

Carolyn McNally, Ed.D.
203.498.6842

SCHOOLS

ACES Center for Autism Spectrum and Developmental Disorders

26 Old Post Road
Northford, CT 06472
Leslie Peters
203.484.9501

ACES Educational Center for the Arts

55 Audubon Street
New Haven, CT 06510
Jason Hiruo
203.777.5451

ACES Mill Road School

295 Mill Road
North Haven, CT 06473
Cynthia Ratchelous
203.234.0303

ACES Thomas Edison Middle School

1355 No. Broad Street
Meriden, CT 06450
Karen Habegger
203.639.8403

ACES Village School

31 Temple Street
North Haven, CT 06473
Carol Bunk
203.234.7611

ACES Whitney High School East/West

205 Skiff Street / 261 Skiff Street
Hamden, CT 06517
Gina Drury
203.407.4500 / 203.281.3577

ACES Whitney High School North

205 Skiff Street
Hamden, CT 06517
Mark Dougherty
203.407.4500

ACES Wintergreen Interdistrict Magnet School

670 Wintergreen Avenue
Hamden, CT 06514
Suzanne Duran-Crelin
203.281.9668

SERVICES

ACCESS

60 United Drive
North Haven, CT 06473
Chidi Onukwughu
203.234.1344

Behavior Services and Autism Programs

31 Temple Street
North Haven, CT 06473
James A. Hoko, Ph.D., BCBA-D
203.234.7611

Early Childhood Services

205 Skiff Street
Hamden, CT 06517
Alice Torres, Ed.D.
203.407.4441

Educational Technology

350 State Street
North Haven, CT 06473
Wanda Wagner, D.M.
203.498.6804

Extension Therapy Services

205 Skiff Street
Hamden, CT 06517
Laura Evangelist
203.407.4470

International Center for Education & Services

350 State Street
North Haven, CT 06473
Jason Hiruo
203.498.6832

Professional Development and School Improvement

205 Skiff Street
Hamden, CT 06517
Leslie Abbatiello
203.407.4402

Pupil Services and Collaborative Programs

350 State Street
North Haven, CT 06473
Vanessa Taragowski
203.498.6849

Technology Services

204 State Street
North Haven, CT 06473
Steven Manley
203.287.6840

Transportation

60 United Drive
North Haven, CT 06473
Dawn Carranzo
203.234.2406

aces

INNOVATORS IN EDUCATION

350 State Street • North Haven, CT 06473

203.498.6800

www.aces.org

